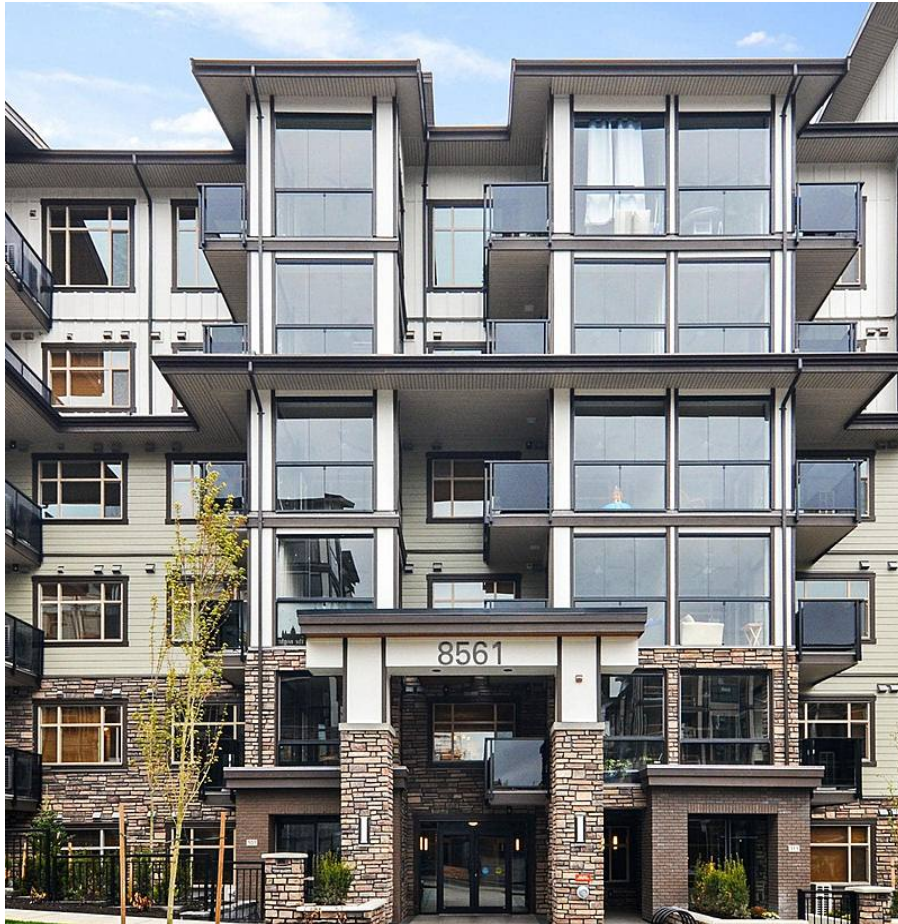


310 8561 203a Street, Langley

\$849,000



Corner unit! 3 bedroom home almost new!
Excellent location across from Carvolth Park and easy ride to Skytrain Station. Features 3 bedrooms, 2 full baths, open plan with large island in the kitchen, quartz counters, 5 burner gas stove, ice maker fridge, loads of cupboards, heated floors in bathrooms, year round enjoyment in your amazing 260 square foot enclosed solarium - windows all open, with gas BBQ connection, A/C- energy efficient heat pump(a/c and heat) beautiful high end laminate and tile flooring. 2 big side by side parking, super sized storage, lots of visitor parking in the underground. Pets and children friendly. Complex has gym and playground. You will be impressed

KEY INFORMATION

MLS® R2683031

Residential Attached

Willoughby Heights

3 Bedrooms

2 Bathrooms

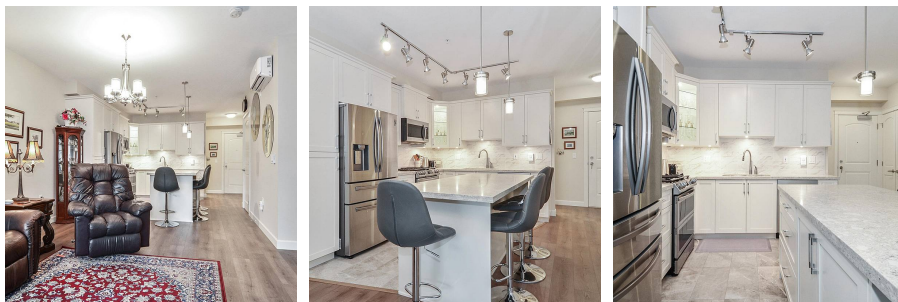
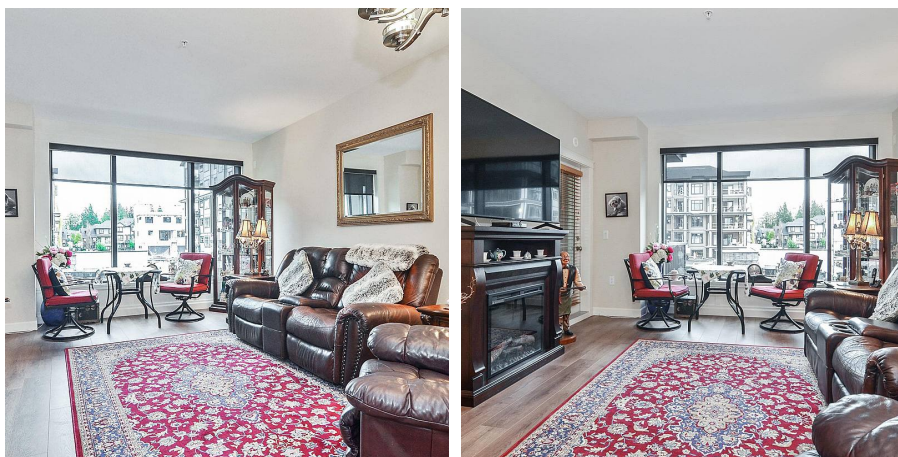
1,118 SF

\$261.38 Maintenance Fees

FEATURES

Year Built: 2021

Listed By: Homelife Benchmark Realty (Langley) Corp.



rennie