

# 202 836 Twelfth Street, New Westminster

\$488,800



FUNKY & FUN 1 BDRM & FLEX LOFT WITH LARGE, PRIVATE ROOF TOP DECK AT LONDON PLACE (BUILT BY BOSA). Open concept kitchen with brand new modern cabinets, counter top & backsplash & walk in pantry. Spacious living room with vaulted ceilings, engineered hardwood flrs & lots natural light that opens onto a large, covered balcony. Flex space upstairs is perfect for an office or guest rm & Roof top deck (19'0 x 9'6) has views to the South & West. Centrally located to all amenities, easy access to transit and sky train - 2 cats allowed - sorry no dogs & rentals at max. Open House Sat. May 7 1-3pm.

## KEY INFORMATION

MLS® R2683247

Residential Attached

West End

1 Bedroom

1 Bathroom

758 SF

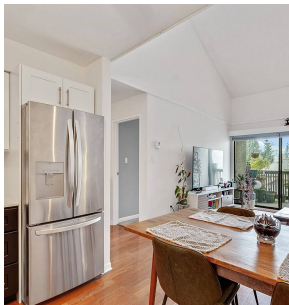
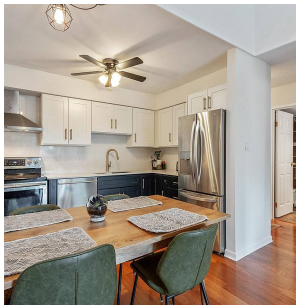
\$434.94 Maintenance Fees

## FEATURES

Year Built: 1984

Views: ROOFTOP DECK - CITY

Listed By: Stilhavn Real Estate Services



rennie