

# 201 3880 Chatham Street, Richmond

\$899,000



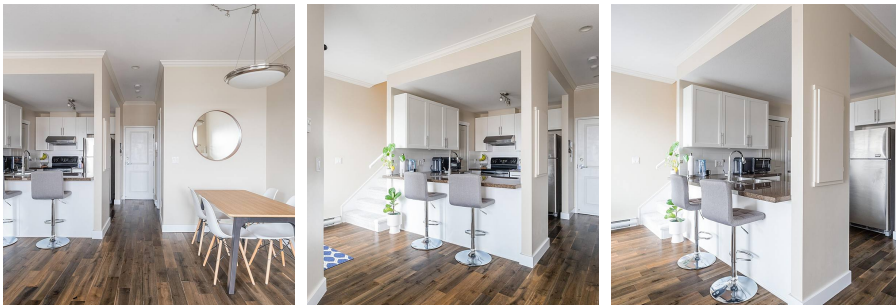
BOUTIQUE LIVING AT STEVESTON VILLAGE - UNIQUE AND RARE 2 LEVEL 2 BEDROOM TOWNHOME WITH GARAGE at Chatham Place. Features include: open concept kitchen, stainless steel appliances, laminate flooring, lots of windows with natural light, 2 decks: one off main living area, and a second private deck off the master bedroom. Steps to coffee shops, restaurants, shopping, trails, Fisherman's Wharf & more. 2 PARKING STALLS (Single Car Garage with Storage)

## KEY INFORMATION

MLS® R2683295  
Residential Attached  
Steveston Village  
2 Bedrooms  
2 Bathrooms  
1,054 SF

## FEATURES

Year Built: 2007  
Listed By: rennie & associates realty ltd.



**Calvin Kan** PREC\*  
604.616.8373  
ckan@rennie.com  
rennie.com/calvinkan

**rennie**