

103 8413 Midtown Way, Chilliwack

\$749,000



Corner Unit! Double Garage! Welcome to Midtown, One of Chilliwack's finest communities! End unit and south facing Townhome featuring 3 levels, 3 Bedrooms and 3 bathrooms with a spacious den and bathroom on the entry floor. This modern and open concept townhome has high end finishing with great features like a double garage, drive way, and a private fenced backyard. Lots of natural light. Close to schools, brand new shopping centres highway 1 and more. This Townhome is a perfect home for families or investors. Many visitor parking stalls located close to this unit and easy access.

KEY INFORMATION

MLS® R2683436

Residential Attached

Chilliwack

3 Bedrooms

3 Bathrooms

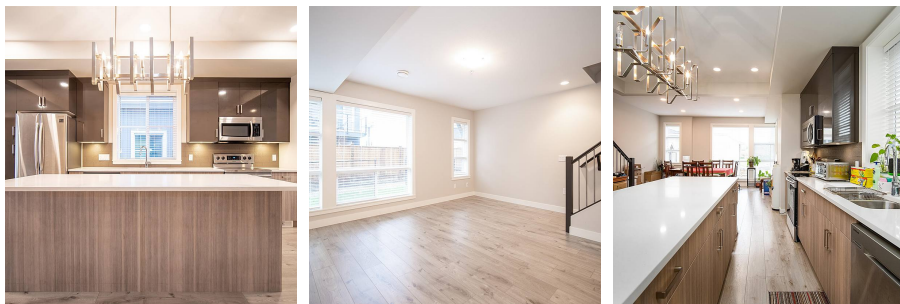
1,781 SF



FEATURES

Year Built: 2019

Listed By: RE/MAX City Realty



rennie