

# 1308 210 Salter Street, New Westminster

\$899,800



Luxury 2 bed, 2 bath, 1097 SqFt waterfront home at the Peninsula, a remarkable collection of residences located on the banks of the Fraser River, central to parks, schools and the QtoQ Ferry. Influenced by sophistication and consciously designed to enhance panoramic views, you'll enjoy an open concept main living area, hardwood floors, floor to ceiling windows, spa-inspired bathrooms, geothermal heat and A/C and a linear fireplace. The culinary kitchen features Gaggenau appliances with integrated fridge and oven, a gas cook-top, quartz countertops and a beautiful waterfall island. The building hosts a suite of world-class amenities including The Panorama Club, Screening Room, Gym, Steam Room, Outdoor Whirlpool and Concierge. Pets & Rentals allowed. Call now!

## KEY INFORMATION

MLS® R2683547

Residential Attached

Queensborough

2 Bedrooms

2 Bathrooms

1,097 SF

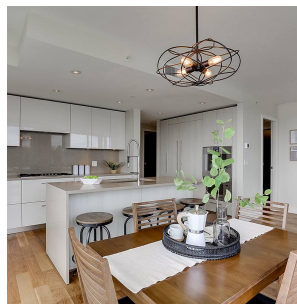
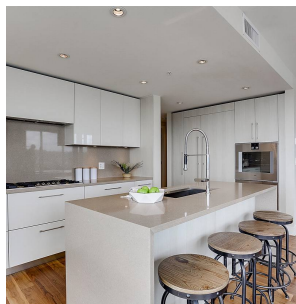
\$553.09 Maintenance Fees

## FEATURES

Year Built: 2017

Views: 180 Degree River

Listed By: Sutton Group-West Coast Realty



rennie