

# 45381 Labelle Avenue, Chilliwack

\$925,000



Awesome 5 bed, 3 bathroom home located on a quiet no passthrough road. Many updates have been done throughout the years including a higher efficiency furnace, double pane windows, flooring, covered patio, and paint. 3 bedrooms upstairs with a large bright living and dining room as well as a spacious kitchen with plenty of counter space. The main house has a 4th bedroom/bonus room downstairs great for a variety of options. Enjoy your mountain views off the big covered patio for year-round enjoyment! Downstairs also has a 1 bedroom fully self-contained walkout in-law suite with separate laundry. A green thumbs paradise is your large backyard with loads of sunlight. Single car garage with a large wide driveway giving space for a trailer/RV. Located close to schools and a short drive to HWY 1!

## KEY INFORMATION

MLS® R2683480

Residential Detached

Chilliwack

5 Bedrooms

3 Bathrooms

1,953 SF

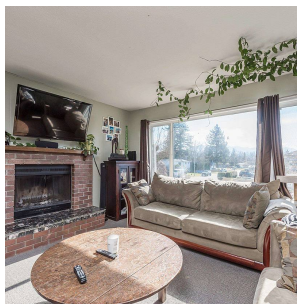
6,100 SF Lot

## FEATURES

Year Built: 1980

Views: Mountain Views

Listed By: RE/MAX Nyda Realty Inc.



rennie