

# 11943 249 Street, Maple Ridge

\$1,300,000



This 2,202 sq ft, Bsmt Entry Home is situated in a great family oriented neighbourhood on an expansive 11,151 sq.ft. level, fenced lot w/private cul-de-sac. Featuring: 4 Bed/3 Full Baths, Gourmet Kitchen, Granite counters, S/S appls, stone backsplash, over-sized island w/built in wine rack & updated light fixtures. The open concept Great Room with gas f/p adjoins to back deck-perfect for entertaining & BBQ. Walk-out bsmt offers a 1 bed in-law suite w/sep entrance & patio. Shared laundry. The backyard offers in-ground sprinkler system, storage shed & RV parking. 2014: On Demand Hot Water, PEX piping, Lennox Furnace & Heat Pump with A/C. Walk to Blue Mtn Elem & Garibaldi Sen Sec. Enjoy the hikes/trails in Kanaka Regional Park & new strip malls with Save On Foods. Open house May 7&8 2-4

## KEY INFORMATION

MLS® R2683647

Residential Detached

Websters Corners

4 Bedrooms

3 Bathrooms

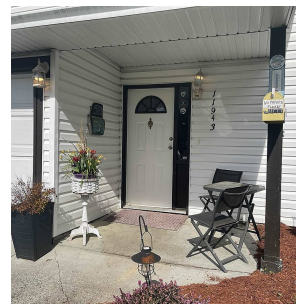
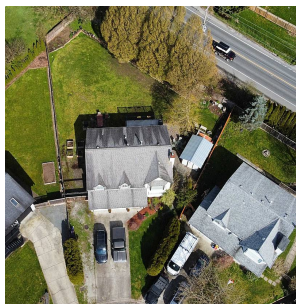
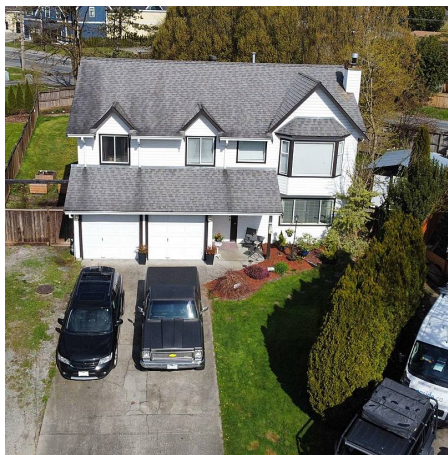
2,202 SF

11,151 SF Lot

## FEATURES

Year Built: 1987

Listed By: RE/MAX LIFESTYLES REALTY



rennie