

# 901 285 E 10th Avenue, Vancouver

\$779,000



The Independent by Rize Alliance is the most recognized concrete high-rise in the Mount Pleasant area! This unique, rarely found two-bedroom features fantastic mountains/water/city views. The functional floor plan got no space wasted!. Great condition, squarish layout, European appliances, and vibrant neighbourhood. The home includes Rize modular closet systems and A/C for maximum comfort. The purchase price includes one EV Rough-in parking and one locker. Amenities include a gym, party room, guest suite, BBQ space, meeting rooms, rooftop garden, and billiards room. Centrally located with local coffee shops, shopping, transit, and False Creek creek seawall! School Catchments: Florence Nightingale Elementary and Sir Charles Tupper Secondary.

## KEY INFORMATION

MLS® R2683825

Residential Attached

Mount Pleasant

2 Bedrooms

1 Bathroom

649 SF

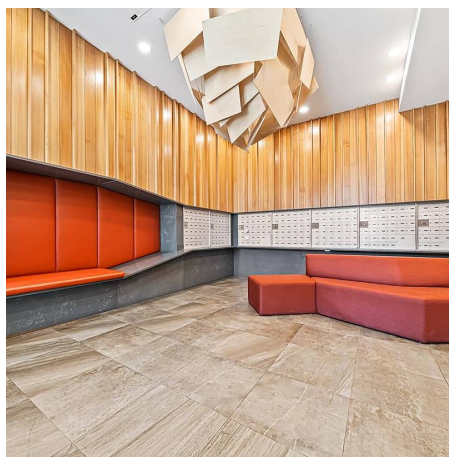
\$377.29 Maintenance Fees

## FEATURES

Year Built: 2019

Views: City, Mountains, Ocean

Listed By: Promerita Realty Corp.



rennie