

35296 Mckinley Place, Abbotsford

\$1,699,000



Seldom do these homes come available. This generational home on a large half acre lot has raised a family. From the road hockey games out in the private cul-de-sac, to the large get togethers around the 17'8x36' concrete pool in a very private west facing backyard, family, friends and great neighbors have been the central theme for this home. Four bedrooms up, complete with a neat little private deck off the master. Huge Country kitchen has all been recently updated and redone. Living Room has a large wood fireplace to gather around. Downstairs can easily accommodate a suite, with its own separate entrance. Walking distance to all levels of East Abbotsford's best schools.

KEY INFORMATION

MLS® R2683508

Residential Detached

Abbotsford East

6 Bedrooms

4 Bathrooms

3,848 SF

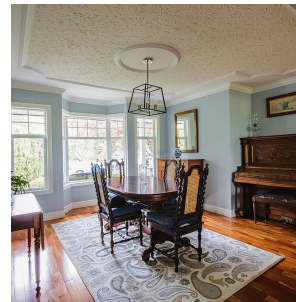
22,216 SF Lot

FEATURES

Year Built: 1980

Views: City View

Listed By: Sutton Group-West Coast Realty (Abbotsford)



rennie