

1208 9830 Whalley Boulevard, Surrey

\$599,999



Fully Renovated 2BR 2BTH Corner Unit in KING GEORGE PARK, This Unit has plenty of windows brightening the functional layout, almost 180 Degree Panoramic view of the Northern Mountains, Fraser River and Night City lights, has New Paint, New Flooring, New Base Board, Remodelled New Kitchen with Quarts Counter Top, All New Samsung Appliances, Remodelled New bathrooms with Quarts Top on Vanity, close to KING GEORGE SkyTrain Station, Surrey City Centre and all kinds of amenities that you are looking for, King George Park Tower has secured underground parking, Lounge, Hot Tub, Exercise Centre, strategically placed cameras in & around building for peace of mind & is perfectly situated for families, commuters & investors, Its a must see!

KEY INFORMATION

MLS® R2684249

Residential Attached

Whalley

2 Bedrooms

2 Bathrooms

1,089 SF

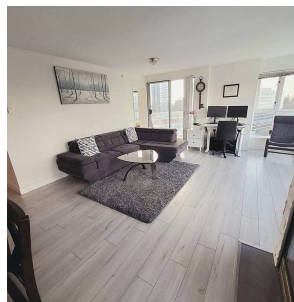
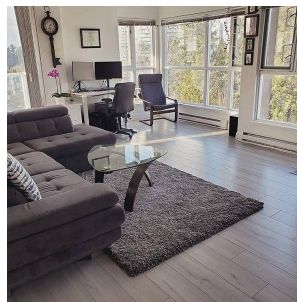
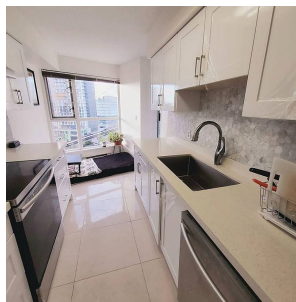
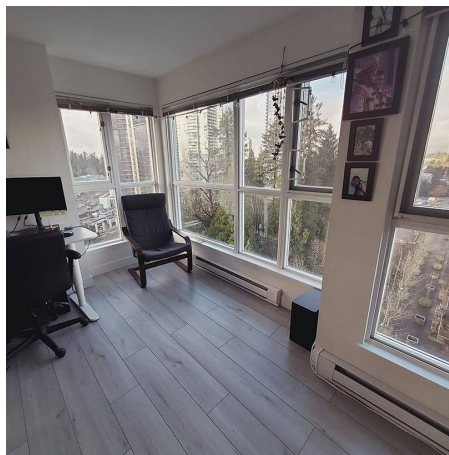
\$498.00 Maintenance Fees

FEATURES

Year Built: 1994

Views: Northern Mountain View

Listed By: RE/MAX City Realty



rennie