

46182 Clare Avenue, Chilliwack

\$885,900



Looking for a home situated in the heart of Fairfield Island? Come No Further! This beautiful home is located walking distance to Fairfield Park, Minter Gardens and a short drive to Island 22. Enjoy your HUGE .27 Acre yard to BBQ and entertain with friends and family! R1-A Zoning to build that massive shop or carriage home of your dreams (with city approval) This 3 bdrm home boasts in-law suite potential with separate entry access. RV Parking, Large Upper/Lower deck for enjoying your morning coffee with breathtaking panoramic mountain views! Make this home yours!! Call Today!!

KEY INFORMATION

MLS® R2684322

Residential Detached

Chilliwack

3 Bedrooms

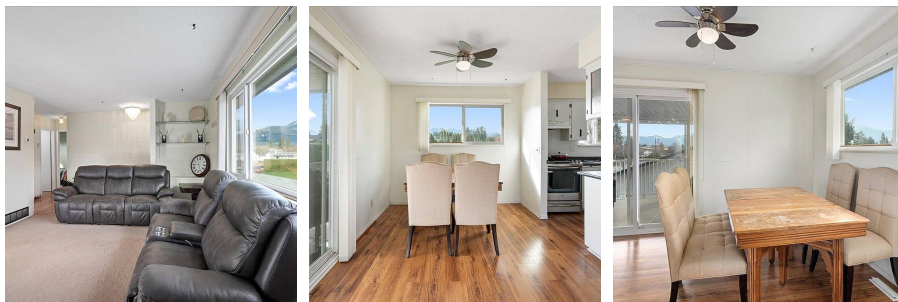
2 Bathrooms

1,619 SF

FEATURES

Year Built: 1977

Listed By: HomeLife Advantage Realty Ltd



rennie