

2511 988 Quayside Drive, New Westminster

\$988,000



RiverSky 2 by Bosa at the Quay in New Westminster! A Breathtaking south facing, 2 bed, 2 bath corner unit with UNOBSTRUCTED views of the Fraser River! Modern Open concept kitchen, gas stove, soft close cabinets, composite stone countertops, integrated refrigerator with bottom freezer & a sleek dishwasher with an integrated door panel, Floor to Ceiling Windows, A spacious Laundry room with Storage space to spare. Spacious well designed floor plan with bedrooms on either side of living area, Outstanding amenities including full-time concierge, fully equipped gym & yoga room. Super convenient location just Steps to SkyTrain, restaurants, grocery stores, coffee shops and the Quay Market and boardwalk! Includes 1 Extremely well located Parking stall and an Over sized Locker.

KEY INFORMATION

MLS® R2684167

Residential Attached

Quay

2 Bedrooms

2 Bathrooms

890 SF

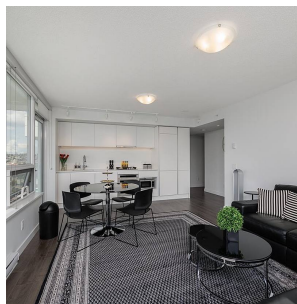
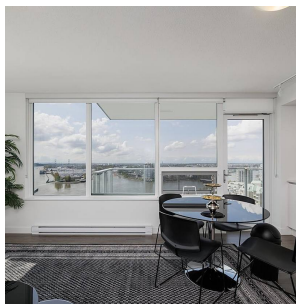
\$548.00 Maintenance Fees

FEATURES

Year Built: 2019

Views: UNOBSTRUCTED WATER VIEW

Listed By: Macdonald Realty



rennie