

406 12090 227 Street, Maple Ridge

\$599,900



Best spot in the building! Top Floor/Penthouse corner unit at the back of the building (quiet side) at popular Falcon Place. 2 Bedrooms, 2 bathrooms, 2 Parking! Over 1150 square feet with a wonderful floorplan, dark laminate floors, vaulted ceiling in living room, freshly painted-bright and airy, new flat ceilings, new lighting, pot lights and air conditioning. Lovely entertaining kitchen with cream coloured maple cabinets, granite countertops and breakfast bar and stainless steel appliances. Private balcony just off the living room. Close to schools, shopping, transit, library, Maple Ridge Leisure Centre, and ACT Art Centre.

KEY INFORMATION

MLS® R2683785

Residential Attached

East Central Maple Ridge

2 Bedrooms

2 Bathrooms

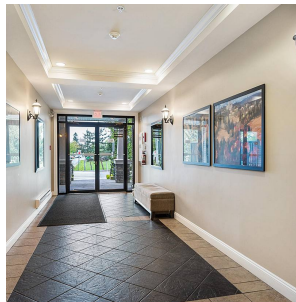
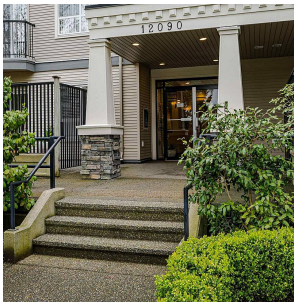
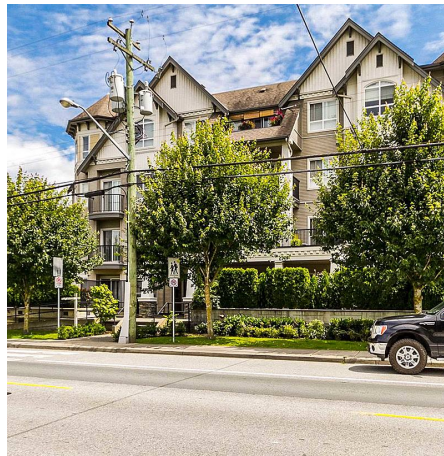
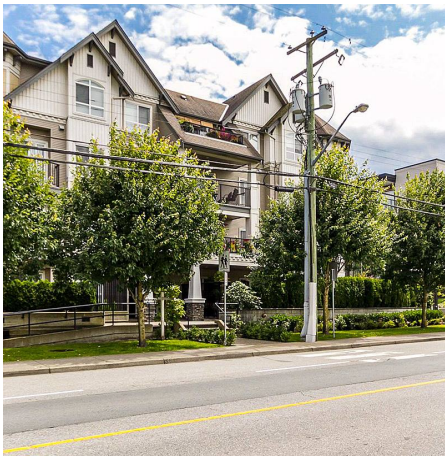
1,152 SF

\$399.13 Maintenance Fees

FEATURES

Year Built: 2005

Listed By: Royal LePage - Wolstencroft



rennie