

47248 Sylvan Drive, Chilliwack

\$1,038,800



BE SURE THIS IS ON YOUR LIST! Lovely Basement home with Incredible Mountain & Valley Views! 2163 sqft Finished plus a DREAM 40' x 20' garage! WOW! Vaulted Ceiling in OPEN PLAN Great Room with sweeping Valley & Mountain Views! Walk-out from Great Room to oversized Sundeck (wired for heaters)! Open Plan Kitchen/Dining - making it PERFECT for Entertaining! Kitchen boasts Upgraded Quartz, Stainless Appliances & Lovely breakfast bar! Walk-out to a beautiful patio area overlooking Greenbelt - it's the perfect setting! 2 bedrooms up including MASTER Retreat with 5pce Ensuite, Sweeping Vaulted Ceilings & W-I Closet! 2nd Bedroom also boasts 4pce Ensuite! Laundry up! 3rd Bedroom down plus an Incredible Media/Family Room-wired for sound! Stunning Modern Farmhouse Decor throughout. It's a 10!

KEY INFORMATION

MLS® R2683294

Residential Detached

Chilliwack

3 Bedrooms

3 Bathrooms

2,163 SF

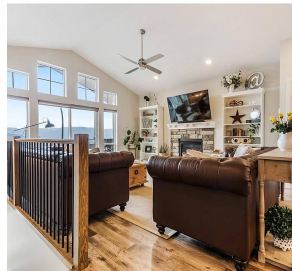
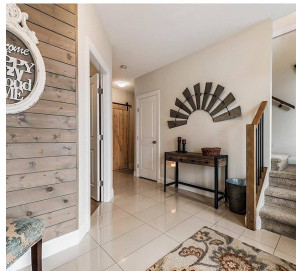
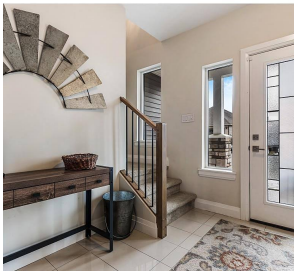
4,600 SF Lot

FEATURES

Year Built: 2016

Views: Sweeping Valley& Mountain View

Listed By: Royal LePage - Wolstencroft



rennie