

# 77 678 Citadel Drive, Port Coquitlam

\$1,248,800



Welcome to Citadel Pointe -gated, prestigious neighbourhood. Bring your decorating ideas to this fabulous floor plan featuring large kitchen with eating area and slider leading to private deck for those bbq get togethers. Dining room with large windows overlooking the beautiful treed area. Living room features gas fireplace and you will enjoy the higher than normal ceilings throughout. Upstairs you will find: Spacious Master Bedroom with 5 peice ensuite + walk in closet, two other bedrooms, bathroom, storage, washer/dryer. Downstairs: Huge recreation room with wet bar, sliding glass door leading to private patio. Large den with opening into the recreation room and bathroom with a large shower. Close and easy access to the freeway for your trips downtown, close to schools, recreation, shops

## KEY INFORMATION

MLS® R2684008

Residential Attached

Citadel

3 Bedrooms

4 Bathrooms

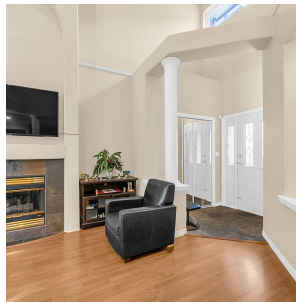
2,647 SF

## FEATURES

Year Built: 2000

Views: COLONY FARM SPACIOUS GREENBELT

Listed By: RE/MAX All Points Realty



rennie