

# 35200 Mccorkell Drive, Abbotsford

\$1,399,999



Welcome to this spacious EAST ABBOTSFORD 2 story with basement family home!! This over 3000 sq ft home offers spectacular VIEWS from windows to enjoy Mt. Baker & the valley. This home features 3 bedrooms on the top floor with a beautifully updated bathroom with refinished tubs, along with a spacious bright master bedroom with 3pc ensuite offering great views from the rooms. The main floor features a south-facing well-appointed kitchen looking onto the valley. Enjoy large spacious family and living rooms for your family get-togethers. This walkout basement offers plenty of potential along with a nicely finished bathroom, separate entry, and a 4th bedroom. Configure the space as a possible mortgage helper or use it as a fam rec room meanwhile having access to the 9,660 sq ft lot. Open Sunda

## KEY INFORMATION

MLS® R2684654

Residential Detached

Abbotsford East

3 Bedrooms

4 Bathrooms

3,074 SF

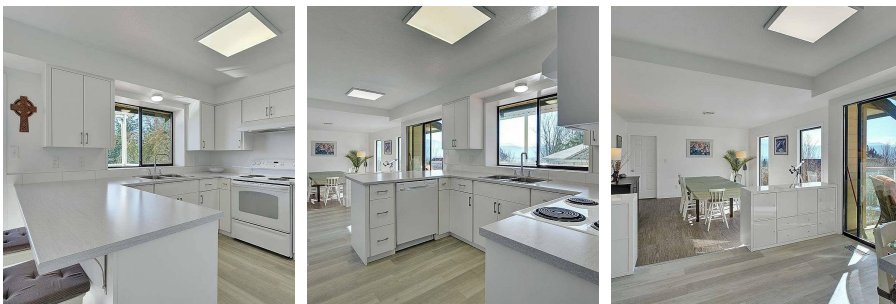
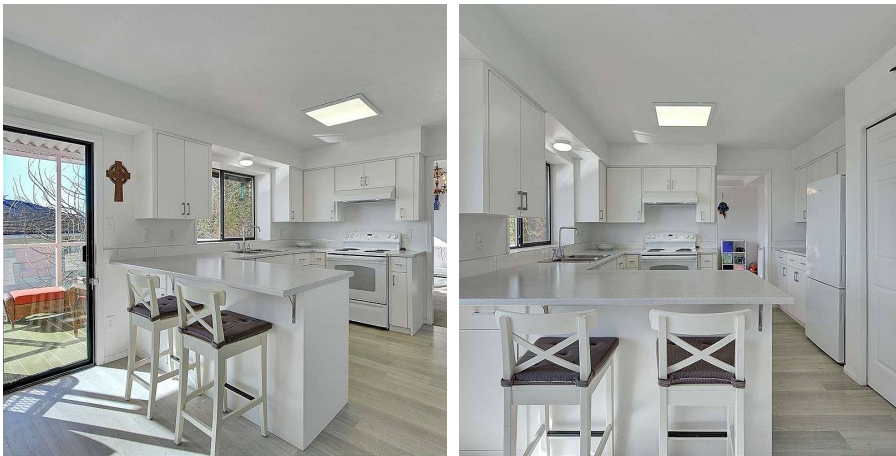
9,668 SF Lot

## FEATURES

Year Built: 1985

Views: Mountains & Valley

Listed By: Royal LePage West Real Estate Services



rennie