

34004 Clayburn Road, Abbotsford

\$9,489,000



Welcome to this income producing blueberry farm on the corner of Mission Hwy & Clayburn Rd! Amazing location with over 1200 feet of exposure on the Mission Hwy! Right across from Lepp Market and the perfect spot for a FRESH FRUIT stand. The farm is approx 37 acres: 15.5 acres of Duke, 8 acres of HardyBlue, 4 acres of Bluecrop and 8 acres for replanting. This field is equipped with poles, wires, drip irrigation, saw dust and more. On this bountiful property sits a beautiful 6 bedroom, 6 bathroom 4,630 sq.ft house with a separate entry 2 bedroom suite! With plenty of space and stunning views of Mt. Baker and the surrounding landscapes, this is the perfect family home. Also on the property is an 11,000 sq.ft shed and a mobile home. Plenty of mortgage helpers! Call today!

KEY INFORMATION

MLS® R2683470

Residential Detached

Matsqui

6 Bedrooms

6 Bathrooms

4,630 SF

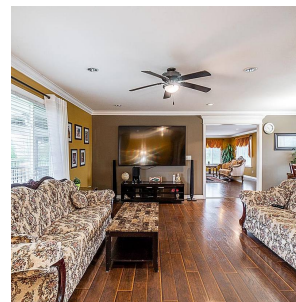
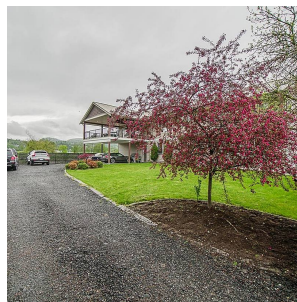
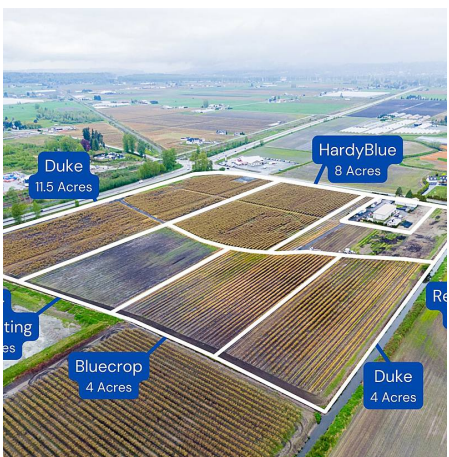
1,604,314 SF Lot

FEATURES

Year Built: 2007

Views: Mount Baker

Listed By: Sutton Group-West Coast Realty (Abbotsford)



rennie