

411 2382 Atkins Avenue, Port Coquitlam

\$539,000



SHOWS LIKE NEW! Top floor, 1 bed & 1 bath north facing condo with mountain views, open concept floorplan, 9ft ceilings & wide plank laminate flooring throughout! Stunning kitchen with euro style cabinets, S/S appliances, under mount lighting, quartz countertops, oversized kitchen island and an abundance of cupboard space! In-suite laundry and 1 parking spot included. Located in the trendy downtown of Port Coquitlam on a quiet no through road. Walking distance to shopping, coq river, restaurants, library, schools, rec center, gates park and the West Coast Express! Easy access to hwy1 or Lougheed hwy. Rentals/pets allowed. Pictures are limited as tenant request. **SHOWINGS BY APP ONLY.**

KEY INFORMATION

MLS® R2684881

Residential Attached

Central Port Coquitlam

1 Bedroom

1 Bathroom

601 SF

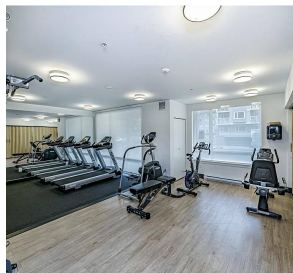
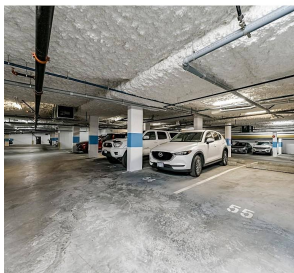
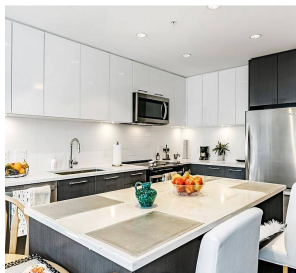
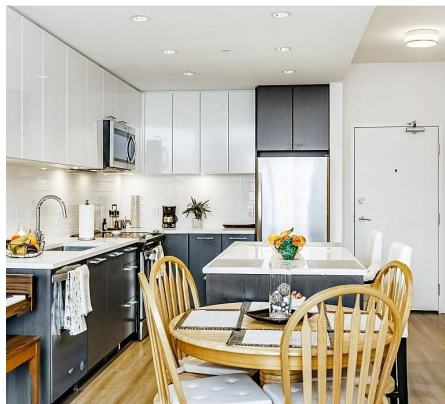
\$219.62 Maintenance Fees

FEATURES

Year Built: 2019

Views: MOUNTAIN

Listed By: Royal LePage Sterling Realty



rennie