

1406 14881 103a Avenue, Surrey

\$499,999



Enjoy spectacular north shore, coastal mountain views from the 14th floor corner unit in Sunwest-Estates. This Northwest exposure unit is very bright, with an open floor plan and very spacious layout. The bedrooms are well thought out, especially the master bedroom with walk-in closet. You are minutes walk to Guildford Town Centre, dining, public library and highways. The maintenance fees include gas & hot water, there is also a bike room and lots of outdoor parking. Call to view your next home today.

KEY INFORMATION

MLS® R2685207

Residential Attached

Guildford

2 Bedrooms

2 Bathrooms

1,028 SF

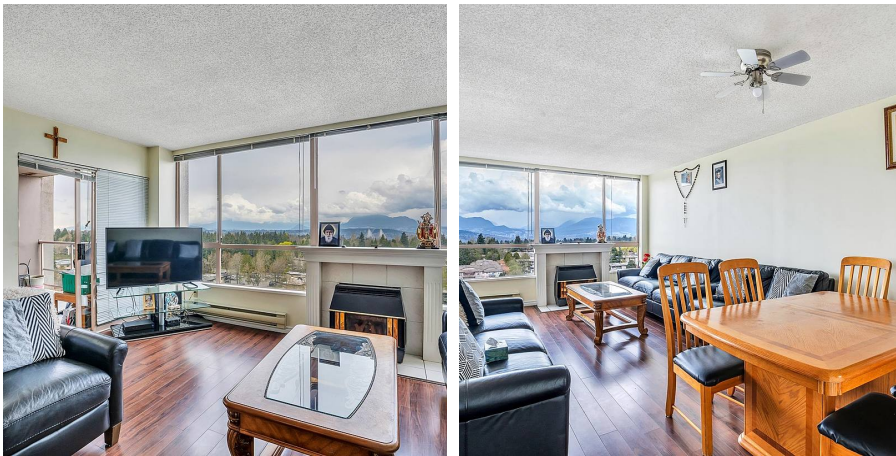
\$359.33 Maintenance Fees

FEATURES

Year Built: 1990

Views: North Shore Mountains & City

Listed By: eXp Realty



rennie