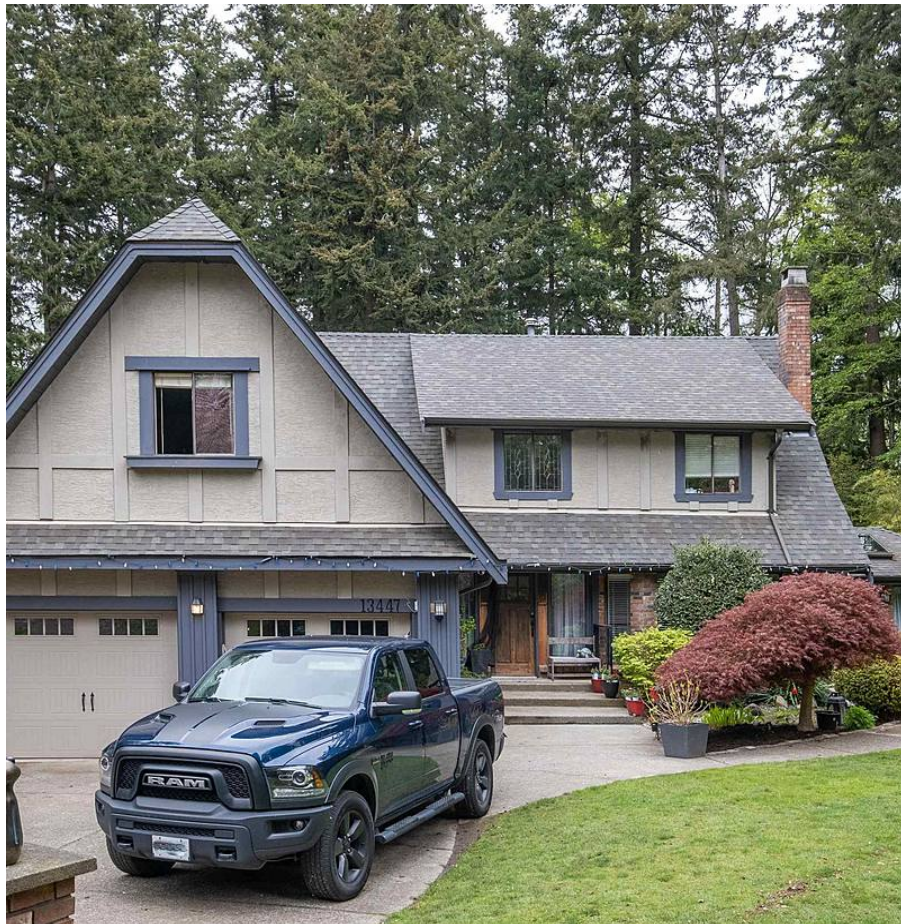


# 13447 26 Avenue, Surrey

\$2,988,000



South facing Grand English Manor located in one of South Surrey's most sought-after Elgin Park neighbourhoods. 0.95 acres lot uniquely located on a cul-de-sac and tucked away in a park-like setting. This home offers privacy and tranquility that is rarely found. Main floor welcomes you w/ the warmth of oak hardwood flooring, generous living room and formal dining area. adjacent is the chef's kitchen w/ SS appliances, granite counter tops, separate eating area overlooking the yard. Take a few steps down to family room w/ fireplace and custom built in storage. This level was completed w/a solarium. Upstairs you will find 4 bdrm plus a games room. Double garage w/ a long driveway, ample parking including RV parking. Top rated Chantrell Creek Elementary and Elgin Park Secondary Catchment.

## KEY INFORMATION

MLS® R2685278

Residential Detached

Elgin Chantrell

4 Bedrooms

3 Bathrooms

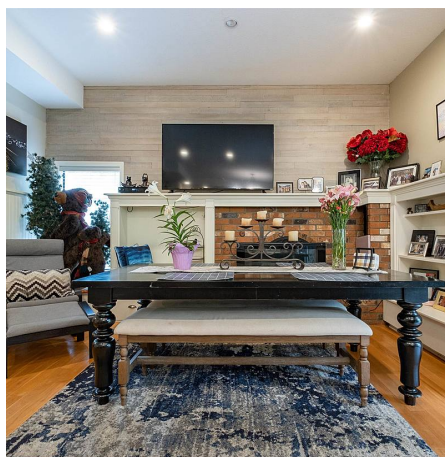
3,494 SF

41,229 SF Lot

## FEATURES

Year Built: 1980

Listed By: Homeland Realty



rennie