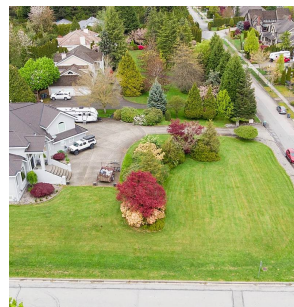


3415 156 Street, Surrey

\$4,888,000



DEVELOPMENT POTENTIAL. A Beautiful one of a kind location and rare opportunity! This 1 Acre Lot is located in hot demand Rosemary Heights and Morgan Creek Golf Course area. Perched high on a hill with terrific views of Mt Baker. 3 story home with over 6250 Sq feet of living space with a separate HUGE 1998 sq foot detached garage. 3 level home with large 2272 on main floor very spacious kitchen and separate living and dining rooms. 4 bedrooms up plus a playroom and den. Basement level has Bedroom games room media room exercise room and plenty of storage. Future Development / Subdivision potential. Truly a rare gem of a property.

KEY INFORMATION

MLS® R2685378

Residential Detached

Morgan Creek

5 Bedrooms

4 Bathrooms

6,251 SF

44,866 SF Lot

FEATURES

Year Built: 1990

Views: Mt Baker

Listed By: Homelife Benchmark Realty Corp.
(White Rock)