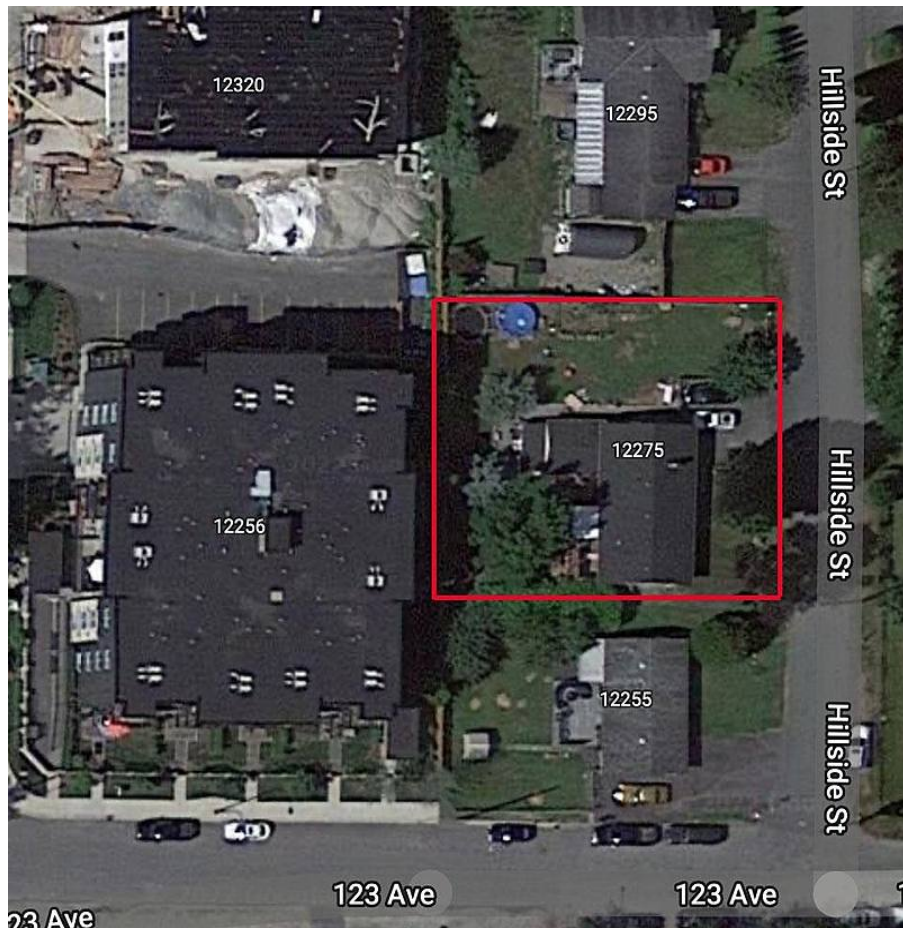


12275 Hillside Street, Maple Ridge

\$2,050,000



West Central Maple Ridge development opportunity. OCP allows Ground Oriented Townhomes or apply for apartments. Property is 11,330 sqft and neighbouring property is also for sale. Total 18,920 sqft of development potential. Current 2 level home is approx 2,500 sqft with unfinished basement and garage. Currently occupied, plus garage. Located just blocks to downtown Maple Ridge. Surrounded by brand new apartments.

KEY INFORMATION

MLS® R2685386

Residential Detached

West Central

4 Bedrooms

2 Bathrooms

2,679 SF

11,330 SF Lot

FEATURES

Year Built: 1960

Listed By: Oakwyn Realty Encore