

304 2089 W 43rd Avenue, Vancouver

\$2,280,000



Stunning Sub Penthouse suite overlooking the quiet tree-lined greenway, situated in prestigious Kerrisdale. The suite boasts many upgraded features including an upscale kitchen including European-inspired floor-to-ceiling veneer cabinetry, beautifully polished quartz counter tops and back splash, full-height Richelieu pull-out cabinets, drawers with ample storage, Franke undermount stainless steel double sink and premium Miele appliances. Highly desired location, walking distance to endless amenities such as the community center, parks, library, shops, restaurants, and some of the best schools in the country. The Stanton is in a tier of its own, bringing together luxury and conveniences of life, all in a prime location.

KEY INFORMATION

MLS® R2683533

Residential Attached

Kerrisdale

2 Bedrooms

2 Bathrooms

1,154 SF

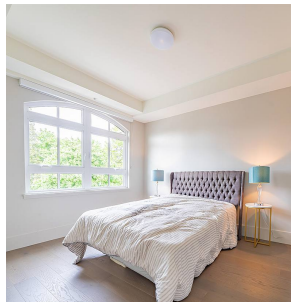
\$491.66 Maintenance Fees

FEATURES

Year Built: 2019

Views: South facing city view

Listed By: Royal Pacific Realty Corp.



rennie