

306 160 Shoreline Circle, Port Moody

\$859,000



Gorgeous 3 Bed & Den, 2 Bath condo at 'Shoreline Villa' in Port Moody! This immaculate corner unit totals 1257 Sqft of living space, & features upgraded laminate flooring, quartz counters, kitchen island & sink, upgraded washer & dryer, and newer S/S stove & fridge!! East facing kitchen with greenbelt view. MASSIVE 614 Sqft Balcony with views of Burrard Inlet, trees, & surrounding mountains!! Perfect to gather with family & friends, BBQ, or simply relax and unwind. Large Master with ensuite & remaining 2 beds both a good size. Den can be a pantry, office, or extra storage. 2 Parking stalls & 1 Storage locker also included! This Rain-screened complex is close to dining, shopping, beaches, skytrain, and much more.. *Viewings by appointment only- Sat & Sun, May 14th & 15th from 1-3pm.

KEY INFORMATION

MLS® R2685903

Residential Attached

College Park

3 Bedrooms

2 Bathrooms

1,257 SF

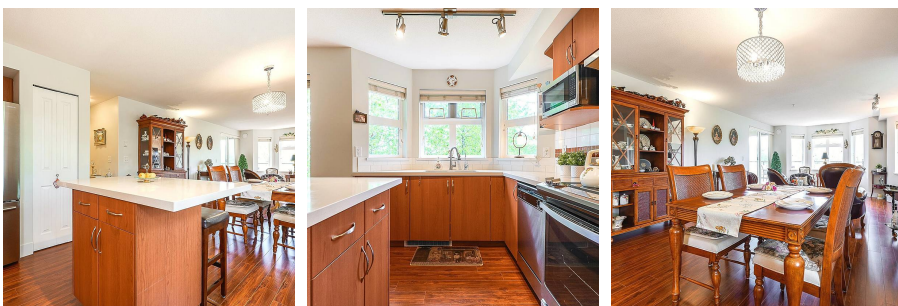
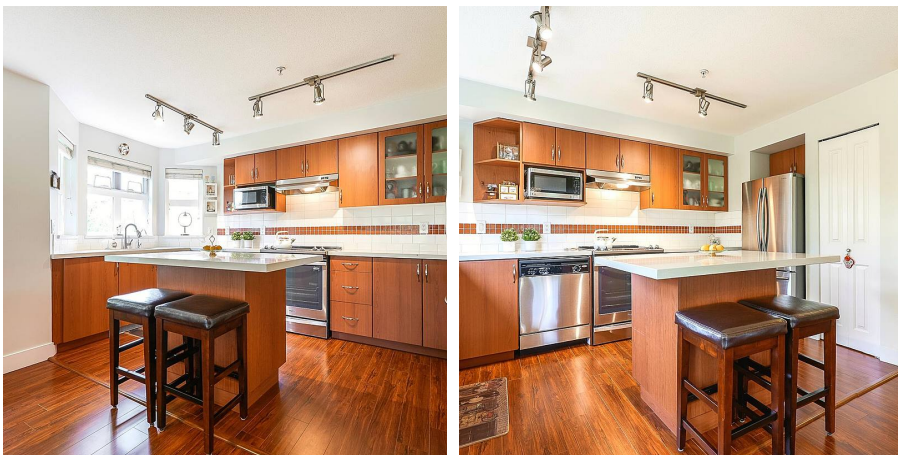
\$416.28 Maintenance Fees

FEATURES

Year Built: 2007

Views: Water, Mountains & Greenbelt

Listed By: eXp Realty



rennie