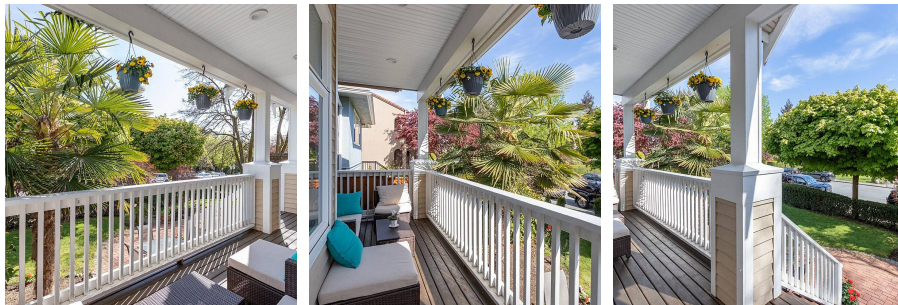


218 E 10th Street, North Vancouver

\$1,199,000



Welcome home to a picturesque craftsman style townhouse, from the moment you walk up to this property your heart will skip a beat. With unrivalled outdoor spaces including a romantic veranda + sunny South facing FRONT YARD! Inside, the main floor offers open concept living w large island for entertaining + a bonus balcony off the dining area. Moving up, the primary bed has an updated ensuite, 2nd bed has its own ensuite + new carpets throughout. Conveniently located in the heart of Central Lonsdale, yet situated on a quiet quaint street just a breath away from St. Andrews Park! Walk to Whole Foods for groceries or Andrew's on 8th coffee shop for your morning coffee. Small 5 units strata (you will not find lower strata fee's!) unbeatable location, huge crawl space for storage + 2 parking!

KEY INFORMATION

MLS® R2685908

Residential Attached

Central Lonsdale

3 Bedrooms

3 Bathrooms

1,332 SF

FEATURES

Year Built: 1996

Listed By: Royal LePage Sussex

rennie