

# 5 3008 Ash Street, Abbotsford

\$1,399,900



Amazing place to call home – w/ such curb appeal it's no surprise this was designed by award winning Su Casa Design! The bsmt entry home has much to offer: A 3 car garage (single & double tandem), 9' ceilings, granite counters, beautiful crown molding, hardwood floors, nest thermostats, gas fireplace & more! Below offers a bachelor or potential nanny/in-law suite w/ sep. kitchen & entrance. Inside: find a functional plan w/ a covered deck & privacy behind you (greenbelt). The kitchen offers a built-in wine-rack, perfect for entertaining. Spa-like ensuite incl. a double vanity & huge walk-in closet. Outside find a captivating private yard w/ quality landscaping. Located within minutes to all amenities but tucked into a quite dead-end street make this home a must view!

## KEY INFORMATION

MLS® R2685332

Residential Detached

Central Abbotsford

4 Bedrooms

3 Bathrooms

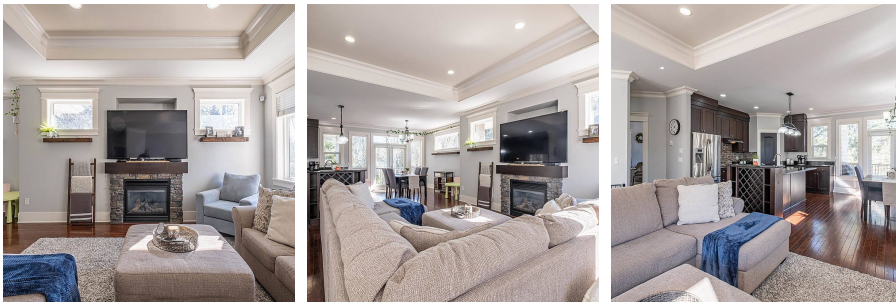
2,424 SF

5,901 SF Lot

## FEATURES

Year Built: 2007

Listed By: Sutton Group-West Coast Realty (Abbotsford)



rennie