

15019 90a Avenue, Surrey

\$1,699,000



Investor Alert ! Very well kept 2storey Recently renovated house on a big lot in a family oriented area. Located on a cul de sac with close access to transit, shopping, doctors offices, restaurants, schools & highways. Very functional layout with 4 spacious bdrms upstairs with Two Washrooms. Living room, family room, dining room & kitchen on the main floor. 2 bdrm side suite as a mortgage helper. Property is a part of the anticipated Fleetwood plan and walking distance to future Fleetwood SkyTrain. Potential Future Townhomes/ Lowrise options. Check New Fleetwood Community Plan Guidelines.

KEY INFORMATION

MLS® R2685829

Residential Detached

Bear Creek Green Timbers

6 Bedrooms

4 Bathrooms

2,800 SF

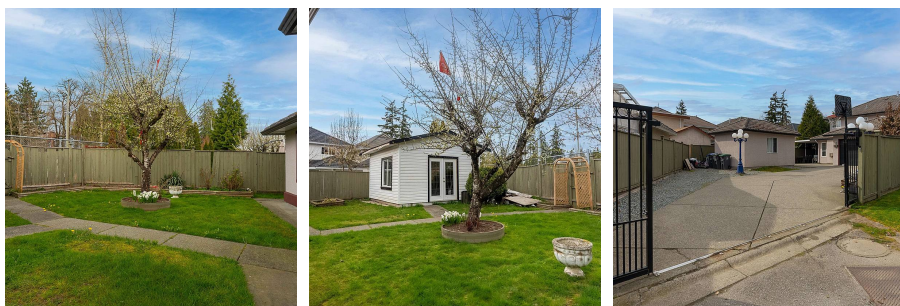
7,522 SF Lot



FEATURES

Year Built: 1996

Listed By: RE/MAX Blueprint Realty



rennie