

12230 80a Avenue, Surrey

\$1,288,000



Queen Mary Park - One of the most desirable areas in Surrey. Rare find this solid and cozy home with high ceiling 8'0-16', 4 bedrooms and 2 full baths located on the quiet cul-de sac. Move in condition, excellent for first time buyers or invest property, enjoy the family-oriented neighborhood. Spacious and functional open layout with nature light throughout. New roof, new floor and new water tank, and new deck...lots of updates. Great sized private backyard facing park, you will fall in love with it. Walking distance to shopping, transportation and restaurants. Call today for details. A Pleasure to show!! Open House 2-4pm Sat May 28. Please call Shawna for details.

KEY INFORMATION

MLS® R2686189

Residential Detached

Queen Mary Park

4 Bedrooms

2 Bathrooms

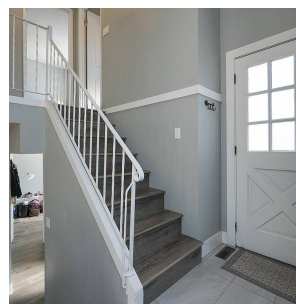
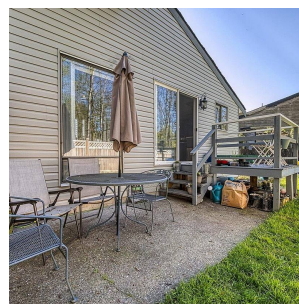
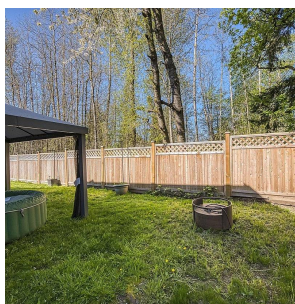
1,438 SF

4,031 SF Lot

FEATURES

Year Built: 1979

Listed By: RE/MAX Select Properties



rennie