

# 14865 95a Avenue, Surrey

\$1,788,000



This FULLY RENOVATED home approved for future TOWNHOME DEVELOPMENT is tucked away in a very charming and quiet neighbourhood. Situated on a 7,500+ sqft lot, this property features a BONUS back lane access! Minutes away from the newly proposed skytrain and close to all schools, shopping centres and major bus routes. The main floor boasts a spacious family room, a formal dining room leading to a covered deck, a master bedroom with an ensuite and two additional bedrooms and full bathroom! The basement features a two bedroom mortgage helper with its own laundry. Showings anytime, contact your realtor!

## KEY INFORMATION

MLS® R2686121

Residential Detached

Fleetwood Tynehead

5 Bedrooms

3 Bathrooms

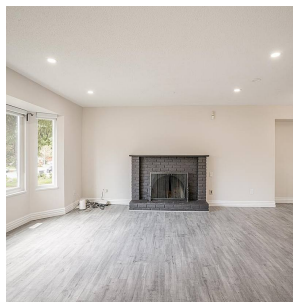
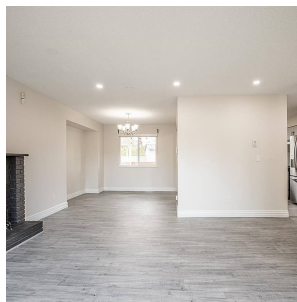
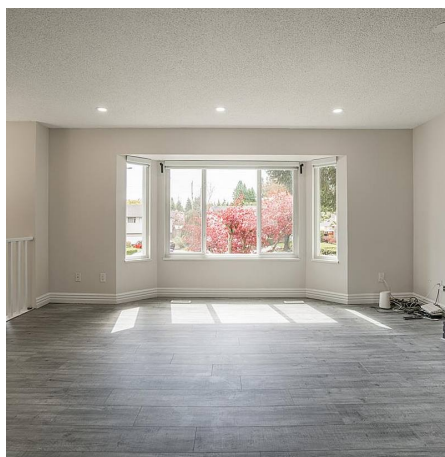
2,357 SF

7,584 SF Lot

## FEATURES

Year Built: 1983

Listed By: eXp Realty (Branch)



rennie