

10132 242b Street, Maple Ridge

\$1,099,000



Amazing and meticulously cared for house for your family in quite but central area in popular Castle Brook. Maple kitchen, granite countertops, new paint in kitchen and newer flooring upstairs. Air conditioning, energy efficient furnace, and on demand tankless hot water were all installed 2017, throughout newer appliances, double garage, super cute garden with fruit trees in the back and spacious front porch; downstairs separate entrance with 1 bedroom for the inlaws. This house has very proud owners and it shows. Everything is close: schools, shopping, parks, trails. Double garage and sprinkler system. This is the one you were looking for.

KEY INFORMATION

MLS® R2686179

Residential Detached

Albion

4 Bedrooms

4 Bathrooms

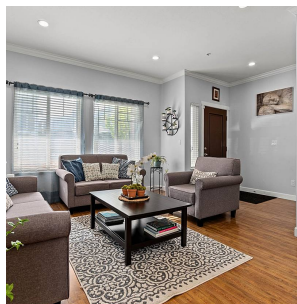
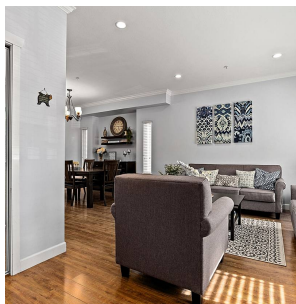
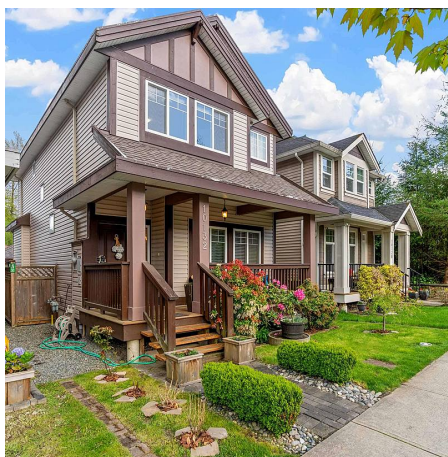
2,134 SF

2,398 SF Lot

FEATURES

Year Built: 2008

Listed By: eXp Realty (Branch)



rennie