

# 103 5373 Peach Road, Chilliwack

\$1,199,900



Mountain & River views! Located steps from the Vedder River this 4 bed 3 bath home is perfect for the nature lover. 2300+ Sq/Ft of living space, BBQ gas hookup, New HWT, updated flooring, triple wide driveway with RV parking, unfinished basement with separate access ready for your ideas, and more. All amenities are close by, including shopping, hiking trails and a dog park. Walk to world class fishing and Peach Park. Cultus lake only minutes away. LOW strata fee of \$260/YEAR! Don't miss your chance to live in this great area.

## KEY INFORMATION

MLS® R2686363

Residential Detached

Chilliwack

4 Bedrooms

3 Bathrooms

2,309 SF

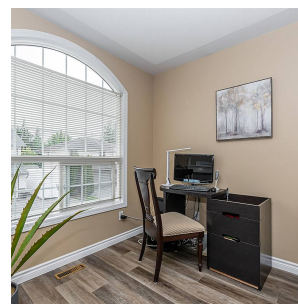
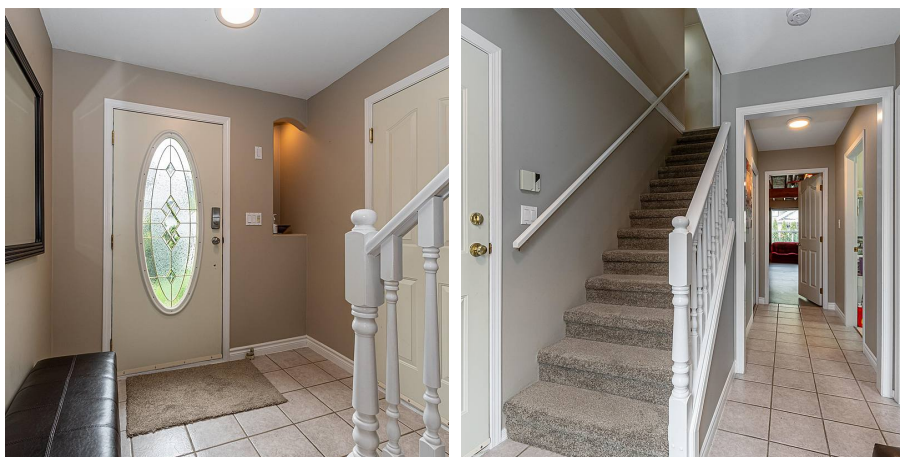
4,598 SF Lot

## FEATURES

Year Built: 1997

Views: Chilliwack River & Mountains

Listed By: HomeLife Advantage Realty Ltd



rennie