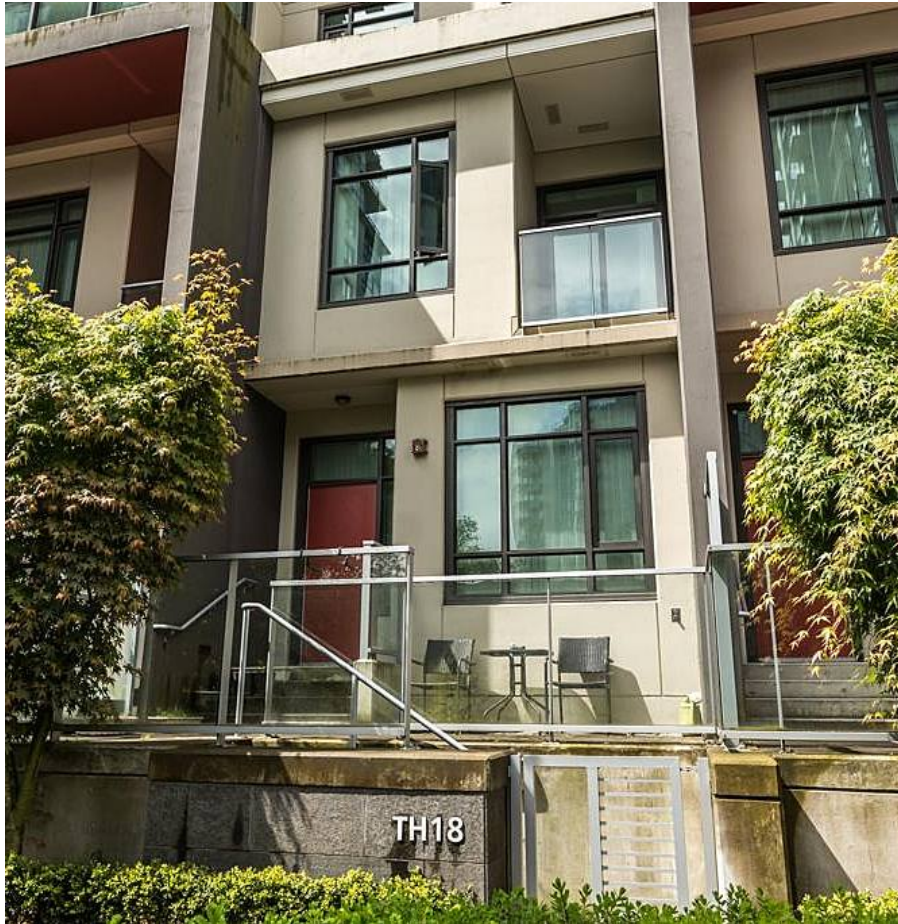


# Th18 7338 Gollner Avenue, Richmond

\$1,099,000



Best LOCATION in heart of Richmond! Minoru park is only back of the building. Walking distance to Public Library, Minoru track, arena center, hospital, Brighthouse Skytrain Station and public transit. Away from main road, quiet and private. The unit can be rented easily. Best living or investment opportunity can not be missed. Open house May 21 and 22 (Sat & Sun) 2-4pm.

## KEY INFORMATION

MLS® R2686606

Residential Attached

Brighthouse

2 Bedrooms

3 Bathrooms

1,086 SF

## FEATURES

Year Built: 2015

Listed By: Sutton Group - Vancouver First Realty

