

1009 68 Smithe Street, Vancouver

\$1,398,900



One Pacific built by Concord offers a unique opportunity to own a rarely available luxury residence. STUNNING SOUTHWEST facing vistas, this CORNER 2 BED + DEN + SOLARIUM, displays FALSE CREEK WATER VIEWS FROM EVERY WINDOW! Elegant upgrades: hardwood flooring, 9' ceilings, Miele appliances, Marble Bathrooms & AC! Den: Perfect for an office offering an abundance of storage needs & the light filled solarium can easily be a 2nd office or a space to enjoy morning coffees! Resort Style Amenities One Pacific & ARC: Concierge, Sky garden dining terrace, Spectacular glass bottom indoor/outdoor pool w/cabanas, Hot Tub, Sauna, Gym & Carwash. With proximity to Seawall, Skytrain & Entertainment, an effortless lifestyle awaits! 2 SIDE BY SIDE PARKING!

KEY INFORMATION

MLS® R2686627

Residential Attached

Downtown

2 Bedrooms

2 Bathrooms

1,002 SF

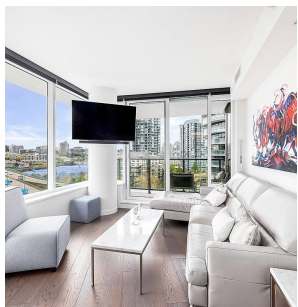
\$657.57 Maintenance Fees

FEATURES

Year Built: 2016

Views: FALSE CREEK & CITY!

Listed By: rennie & associates realty ltd.



Eric Zamora PREC*
778.389.4556
ezamora@rennie.com
rennie.com/ericzamora



Shelly Vellani PREC*
604.710.3681
svellani@rennie.com
rennie.com/shellyvellani

rennie