

# 309 2336 Whyte Avenue, Port Coquitlam

\$621,000



Extremely rare & hardly ever available, this large 2 bedroom, 2 bathroom in the prestigious Whistler inspired Centrepointe is located in the heart of Downtown Port Coquitlam & centrally located to all amenities including shopping, restaurants, schools, trails, transit, and west coast express are just a short walk away. Situated on the 3rd floor, this unit has an open & extremely functional floor plan. Upscale luxury finishings including: gorgeous wood floors, fireplace, stainless steel appliances, and stone countertops. Enjoy the huge balcony. Bonus this home comes with 2 secured side x side secured parking stalls. This unit looks extremely well and close to the elevator Quick possession is available if needed. Location is key & this has all the right features that go with it. Act quick.

## KEY INFORMATION

MLS® R2686711

Residential Attached

Central Port Coquitlam

2 Bedrooms

2 Bathrooms

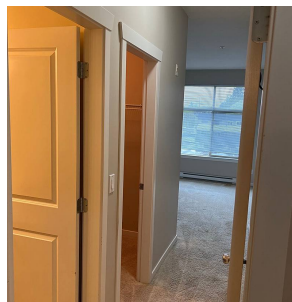
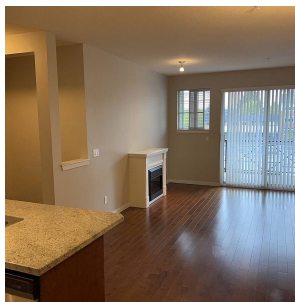
981 SF

\$278.20 Maintenance Fees

## FEATURES

Year Built: 2008

Listed By: Team 3000 Realty Ltd.



rennie