

317 12238 224 Street, Maple Ridge

\$634,800



This unit is corner unit and it is bright 2 Bed/2 Full Bath/2 Parking & Rentals + pets ok. Urbano building greets you with it's G plan super bright corner unit with huge windows for natural light. This is 2beds plus a den/flex or a computer desk, corner fire place, open plan design with kitchen island/ breakfast bar, large south western exposed deck, great master suit with walk through closet and a large shower , 2nd bed separated from the master for privacy, formal entry area and heated secure storage locker on the same floor as your unit . Walk to all amenities , transit, recreation ,shopping. One Dog or cat ok. Notice required.

KEY INFORMATION

MLS® R2686717

Residential Attached

East Central Maple Ridge

2 Bedrooms

2 Bathrooms

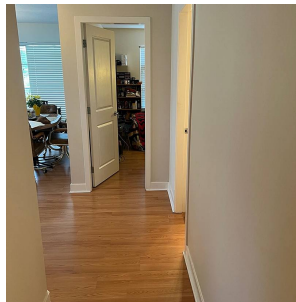
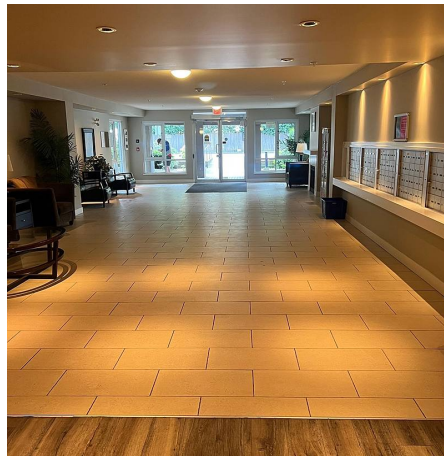
922 SF

\$315.25 Maintenance Fees

FEATURES

Year Built: 2008

Listed By: Team 3000 Realty Ltd.



rennie