

# 206 828 Royal Avenue, New Westminster

\$720,000



QUIET south facing TOP FLOOR end townhouse in BRICKSTONE WALK. A boutique collection of heritage style townhouses in a gated complex. MAIN floor features an open layout with a large entertaining size kitchen with shaker cabinetry, stainless steel appliances, sile stone countertops, combined dining & living room, 2pc bathroom, south facing private balcony. TOP floor features a master bedroom with 4pc ensuite, 2nd bedroom with 4pc bathroom & laundry. Fantastic prime location in the central historic DT New West. Steps to cafes, restaurants, waterfront quay, farmers markets parks, Skytrain (25 mins to DT Vancouver). 1 parking, 1 storage locker, Pets OK, rentals allowed.

## KEY INFORMATION

MLS® R2686881

Residential Attached

Downtown

2 Bedrooms

3 Bathrooms

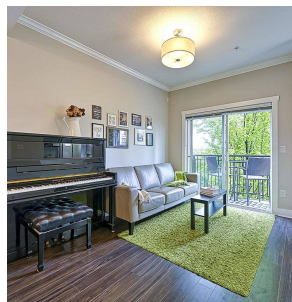
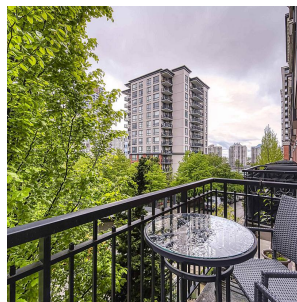
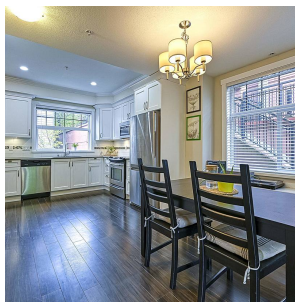
967 SF

967 SF Lot

## FEATURES

Year Built: 2012

Listed By: Macdonald Realty



rennie