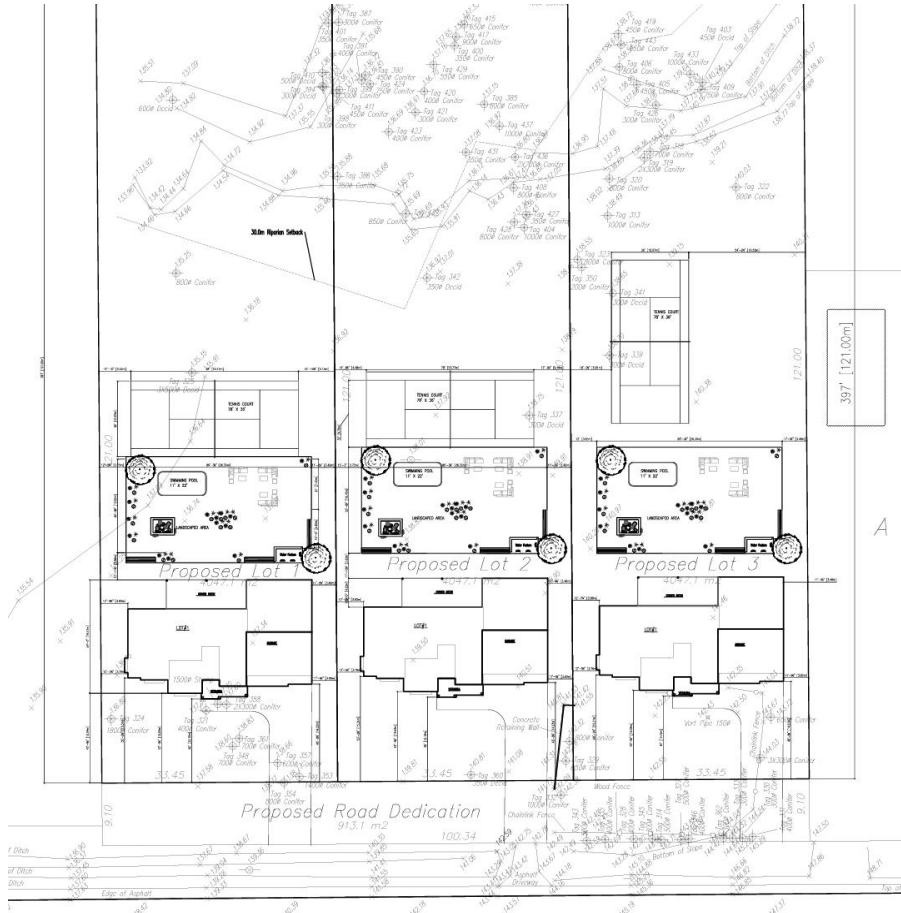


26635 Dewdney Trunk Road, Maple Ridge

\$2,999,888



Investors/ Builders ALERT! An AMAZING Opportunity to own a Large 9.75 Acre Parcel in an area of exclusive homes in Maple Ridge on Prime Dewdney Trunk Rd. Rezoning Application is in process for three Large 1Acre subdivisions to build your Custom Dream Home. Nearby properties host gorgeous homes situated on 1-acre properties. Conveniently located near town and easy access to Webster's Corners. Unlimited Potential with this property, In Vicinity to future Development Area - Great Investment Opportunity.

KEY INFORMATION

MLS® R2686238

Land Only

Northeast Maple Ridge

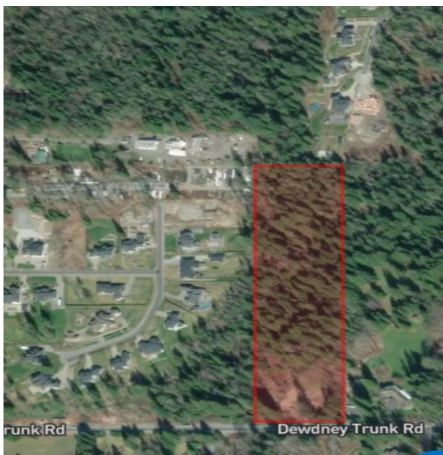
0 Bedrooms

0 Bathrooms

0 SF

FEATURES

Listed By: Sutton Group-West Coast Realty (Surrey/120)



rennie