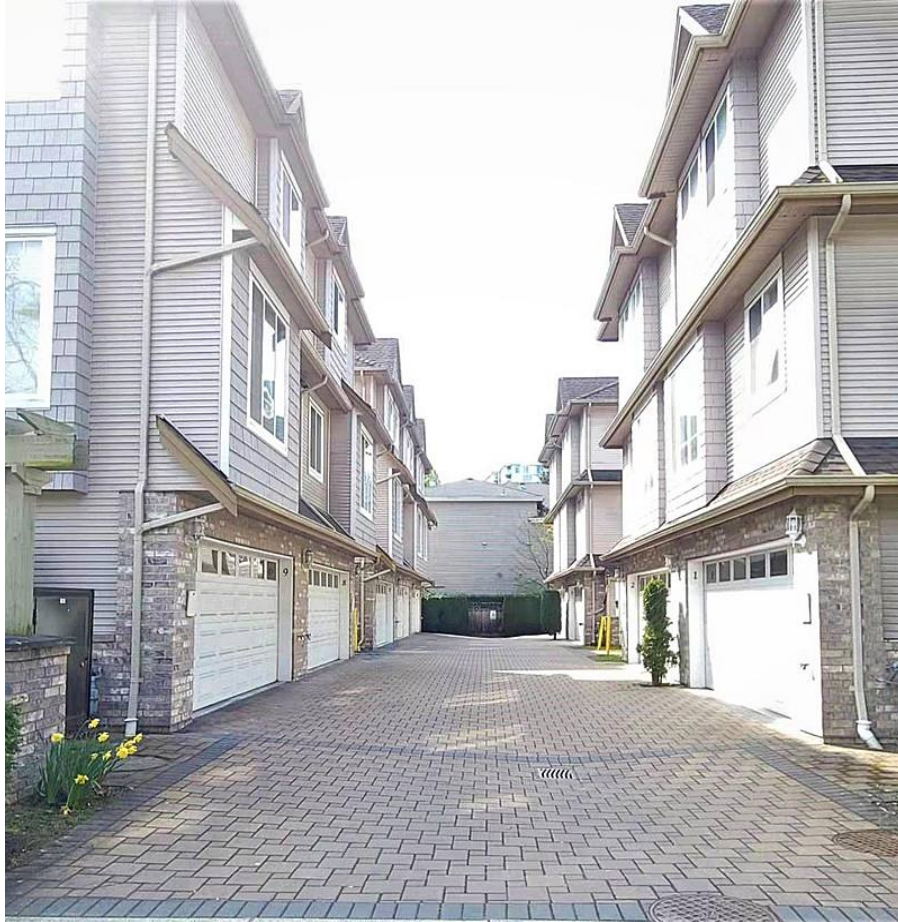


# 2 8388 Park Road, Richmond

\$1,090,000



Central Location. 5 minutes walk to Richmond Centre and Skytrain Station, Garden City Park. 10 minutes to Public Market. Inside corner unit with private fenced yard and sundeck. 9" ceiling on main. 4 bedrooms (3 up & 1 down) and 2.5 baths, cozy gas fireplaces, double side by side garage. OPEN HOUSE MAY 21 SAT 3-4PM and 22 SUN 3-5PM.

## KEY INFORMATION

MLS® R2687018

Residential Attached

Brighthouse

4 Bedrooms

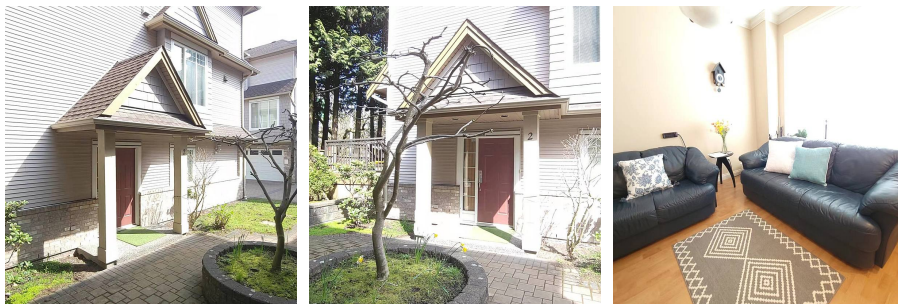
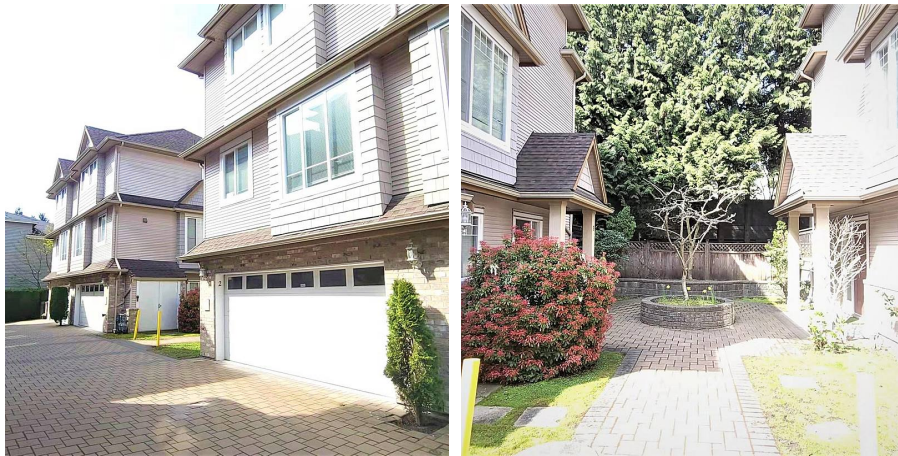
3 Bathrooms

1,569 SF

## FEATURES

Year Built: 2002

Listed By: RE/MAX Crest Realty



rennie