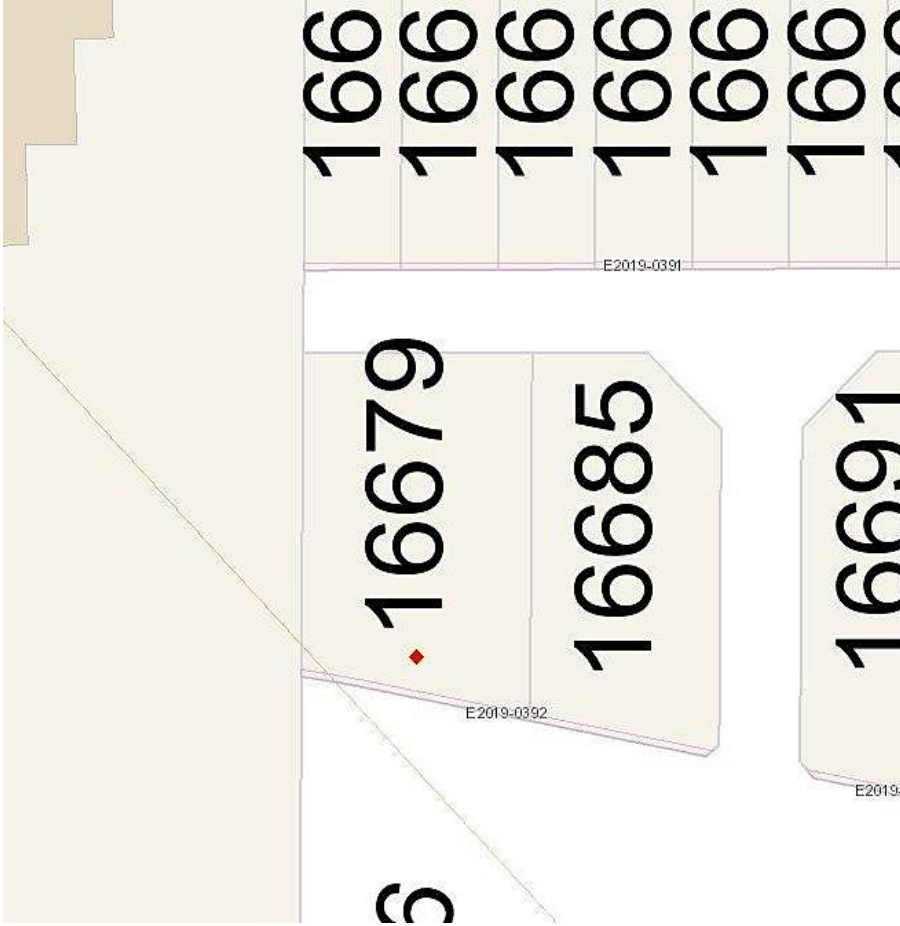


16679 15a Avenue, Surrey

\$1,275,000



Build your dream home in the newest subdivision in South Surrey. RF-13 lot with frontage over 55 feet and can accommodate 2 storey home plus basement. Located close to US border, Highway, shopping, beach, parks & both levels of school. Call now for more info, All measurements are approx. buyer or buyer's agent to verify if deemed imp.

KEY INFORMATION

MLS® R2684326

Land Only

Crescent Beach

0 Bedrooms

0 Bathrooms

0 SF

4,547 SF Lot

FEATURES

Listed By: Sutton Premier Realty