

1201 2200 Douglas Road, Burnaby

\$829,000



Welcome to AFFINITY BY BOSA! Enjoy the benefits of living in this well managed, safe & secure building which is located in the heart of Brentwood and within walking distance to Skytrain, Brentwood Town Centre, Parks, and Lougheed Hwy. A corner unit which includes 2 spacious bedrooms plus an oversized window with lots of natural light. The unit has a big balcony with a great view of the north mountains, which would be an ideal place for your summer BBQ. The unit offers a gourmet kitchen with a built-in oven, integrated cabinets, dishwasher and refrigerator. Washer and dryer are ensuite. It also comes with 2 parking lots plus 1 locker storage. Last but not least EV Chargers, Self-serve car wash bay located in underground parking. Open House on May 28/29 between 1:00-3:00 pm.

KEY INFORMATION

MLS® R2687548

Residential Attached

Brentwood Park

2 Bedrooms

2 Bathrooms

901 SF

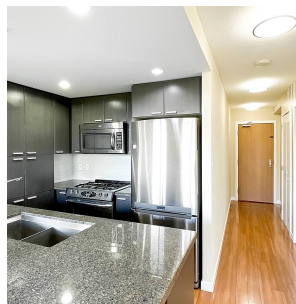
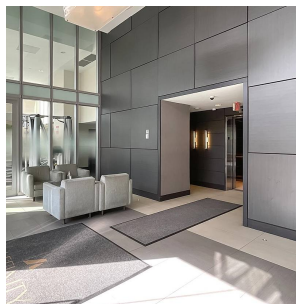
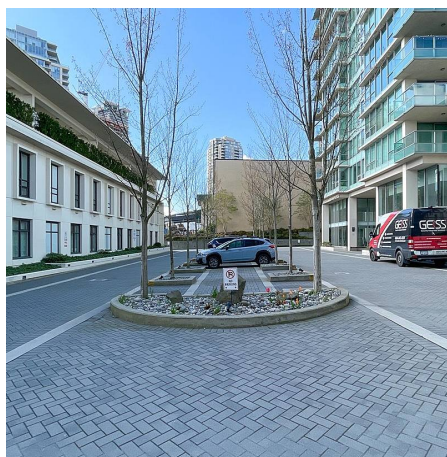
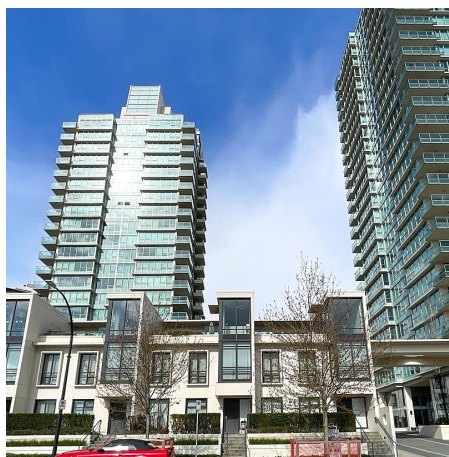
\$340.16 Maintenance Fees

FEATURES

Year Built: 2012

Views: MOUNTAINS

Listed By: Regent Park Realty Inc.



rennie