

209 13897 Fraser Highway, Surrey

\$549,900



Stunning updated home in the sought after EDGE complex in the heart of Surrey. This spacious 2 BED, 2 FULL BATH unit has a great open concept floor plan with plenty of sunlight. Master bedroom comes with a huge walk-in closet and ensuite. This home has lots of updates from new paint, appliances, new carpet in the bedrooms, and lighting fixtures. Kept in immaculate condition. Just steps away from the King George skytrain, shopping malls, recreation centers, surrey memorial hospital and much more. Best location in Downtown Surrey! Comes with 1 parking, 1 storage locker and plenty of visitor parking. This home is perfect for down-sizers, investors, and first time home buyers. Call/Text to view it today! Open house Sat May 14, 1:00PM-4:00PM & Sun May 15, 2:00PM-4:00PM.

KEY INFORMATION

MLS® R2687558

Residential Attached

Whalley

2 Bedrooms

2 Bathrooms

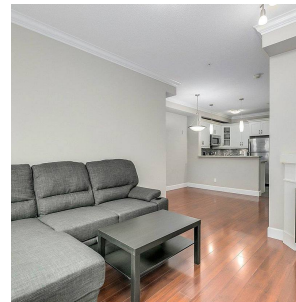
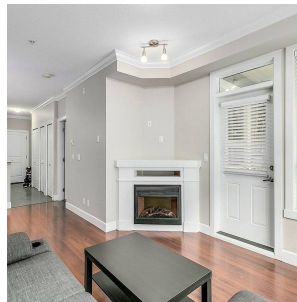
835 SF

\$400.95 Maintenance Fees

FEATURES

Year Built: 2011

Listed By: Keller Williams Elite Realty



rennie