

# Lt.2 20145 Grade Crescent, Langley

\$1,189,000



9000 sqft lot ready to build on this summer! Best lot in the development. Private backyard backing on to the park Sendall Gardens. Lot will take a fully in-ground basement. No Grade Crescent frontage. Lot is accessed via a private road and is 150 feet away from Grade Cres. Langley City is the place to build! Major OCP update released last year, Skytrain coming soon and very quick building permits. Lot 3 available as well see MLS#R2686126. Lots are fully serviced and ready to build on. Registration expected next week. Finished, engineered plans available for a 5500 SQFT 8 bed/8 bath home. Absolutely no access/ trespassing on the site without first arranging access through a Realtor.

## KEY INFORMATION

MLS® R2686088

Land Only

Langley City

0 Bedrooms

0 Bathrooms

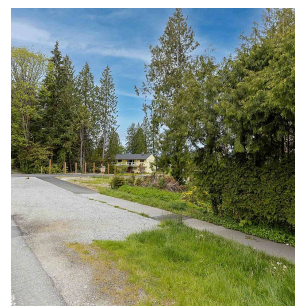
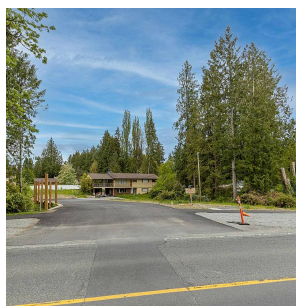
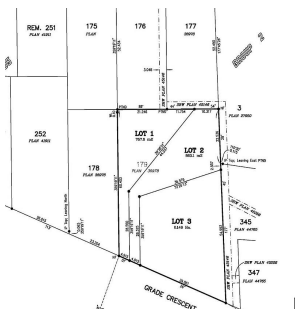
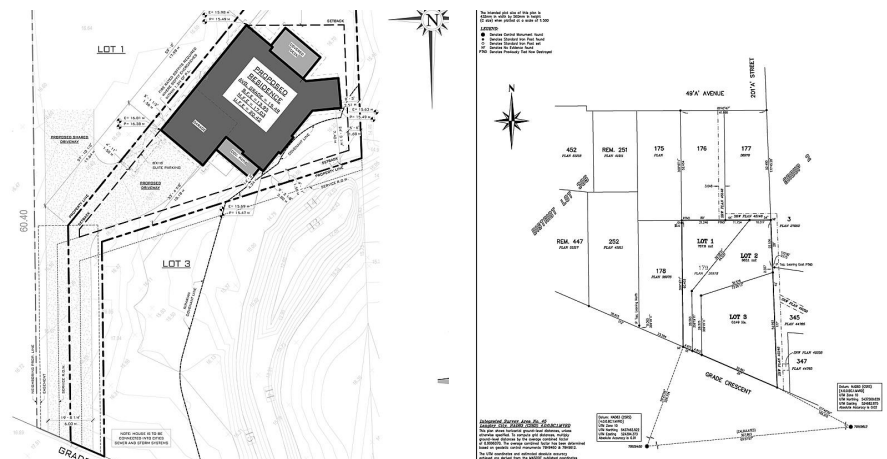
0 SF

9,290 SF Lot

## FEATURES

Views: Park and Green Space

Listed By: Royal LePage - Wolstencroft



rennie