

# 301 22575 Brown Avenue, Maple Ridge

\$549,900



Welcome to EDGE 3 by award winning MacLean Homes! This SPACIOUS 1 BEDROOM + DEN | 1 BATH, SOUTH FACING unit, features over height ceilings, QUARTZ counters, S/S appliances, LAMINATE flooring throughout, shaker style cabinets, MASSIVE ISLAND and a LARGE BALCONY to soak in the sun. Building features a pet washing station, bike repair station, bike storage, EV parking and more! 1 parking stall included. EDGE 3 is the newest addition to the established yet evolving community of Downtown Maple Ridge and conveniently located just steps from shopping, restaurants, parks, trails and more! Easy access to West Coast Express, Golden Ears, and Pitt River Bridges, so nothing is ever out of reach. Estimated completion is Fall 2024.

## KEY INFORMATION

MLS® R2687626

Residential Attached

East Central Maple Ridge

1 Bedroom

1 Bathroom

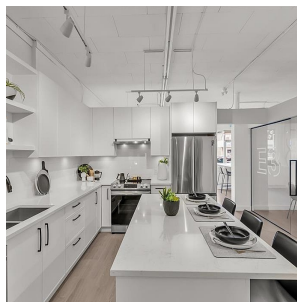
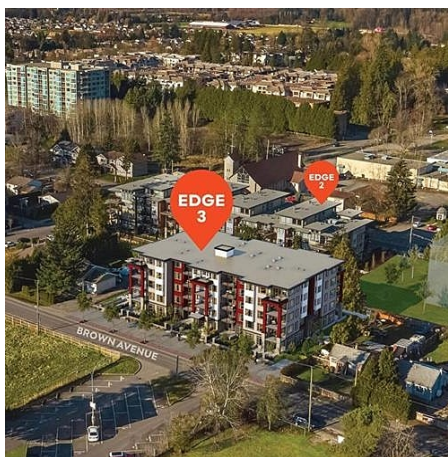
652 SF

\$208.67 Maintenance Fees

## FEATURES

Year Built: 2024

Listed By: Sutton Group-West Coast Realty



rennie