

101 33539 Holland Avenue, Abbotsford

\$454,900



INVESTORS & FIRST TIME BUYERS ALERT -
Welcome to this 1 bedroom ground floor unit at the crossing. This unit features a big north facing concrete patio, laminate floor throughout the living area, granite countertops, stainless appliances include fridge, Stove, Dishwasher and washer/ dryer. Convenient location for transit, close to the University of Fraser valley, Shopping and easy access to HWY 1. THE best part this unit comes with 3 parking spots underground included (37,40,41). Use them or rent them out.

KEY INFORMATION

MLS® R2687722

Residential Attached

Central Abbotsford

1 Bedroom

1 Bathroom

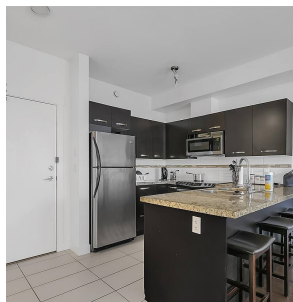
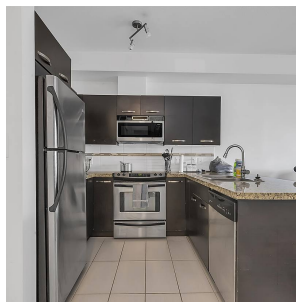
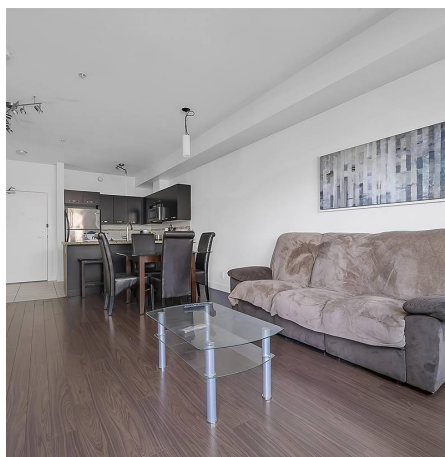
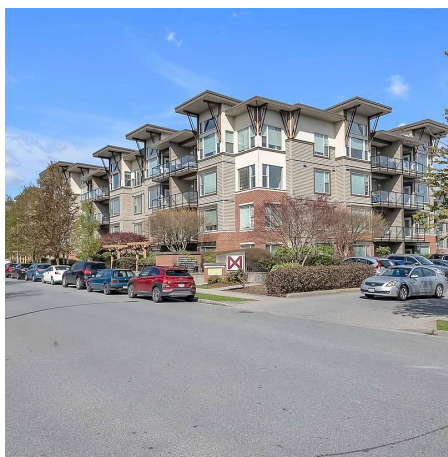
685 SF

\$240.00 Maintenance Fees

FEATURES

Year Built: 2009

Listed By: Stonehaus Realty Corp.



rennie