

705 520 Como Lake Avenue, Coquitlam

\$786,000



CROWN - Concrete highrise built by renowned developer Beedie in the heart of prime Burquitlam area. This bright NW corner unit was very well cared for and looks brand new! Perfect functional layout with no waste space! Wood flooring throughout!! Spacious living+ dining room, gourmet kitchen with gas stove, garburator, quartz countertop. Upgraded smart lighting controlled by voice/APP, newer painting. 2 Bedrooms on separate side for better privacy. Floor to ceiling windows provides spectacular Mountain & City view. 1 spacious Parking & 1 Locker. Rentals and Pets Allowed! Close to SFU, SkyTrain Station, Restaurants, Shops & Services. Don't miss your opportunity to view this stunning 2 bed condo before it's gone. Must come in person to appreciate!! Open house SAT/SUN (MAY21/22) 2-4PM.

KEY INFORMATION

MLS® R2687082

Residential Attached

Coquitlam West

2 Bedrooms

2 Bathrooms

850 SF

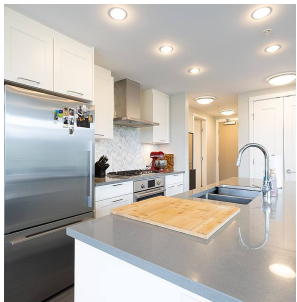
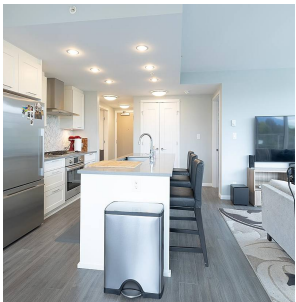
\$404.00 Maintenance Fees

FEATURES

Year Built: 2017

Views: MOUNTAIN & CITY

Listed By: Interlink Realty



rennie