

302 232 Sixth Street, New Westminster

\$519,999



Prime location in Uptown New Westminster, 1bed/1bath home with 653 interior sq feet of living space. Moody on the Hill development located at the corner of Welsh Street & 6th is a short 7-10min walk from the Columbia and New Westminster Sky Train Stations. Just steps from plaza, grocery stores, boutiques, restaurants and 7min walk to Fraser River Middle School. Walking distance to Douglas College and Yorkville University. Home features 1 parking and 1 storage locker. Completion Jan-June 2023

KEY INFORMATION

MLS® R2687479

Residential Attached

Uptown

1 Bedroom

1 Bathroom

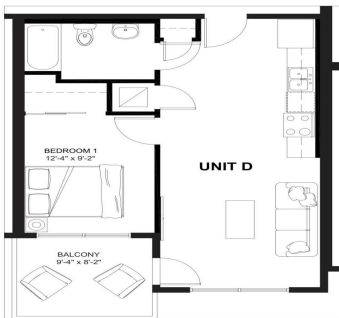
577 SF

\$201.95 Maintenance Fees

FEATURES

Year Built: 2022

Listed By: rennie & associates realty ltd.



UNIT D
1 BEDROOM - 1 BATH
INTERIOR: 577 SQ. FT.
EXTERIOR: 76 SQ. FT.
TOTAL: 653 SQ. FT.



Dal Milin PREC*
778.881.9021
dmilin@rennie.com
rennie.com/dalmilin

rennie