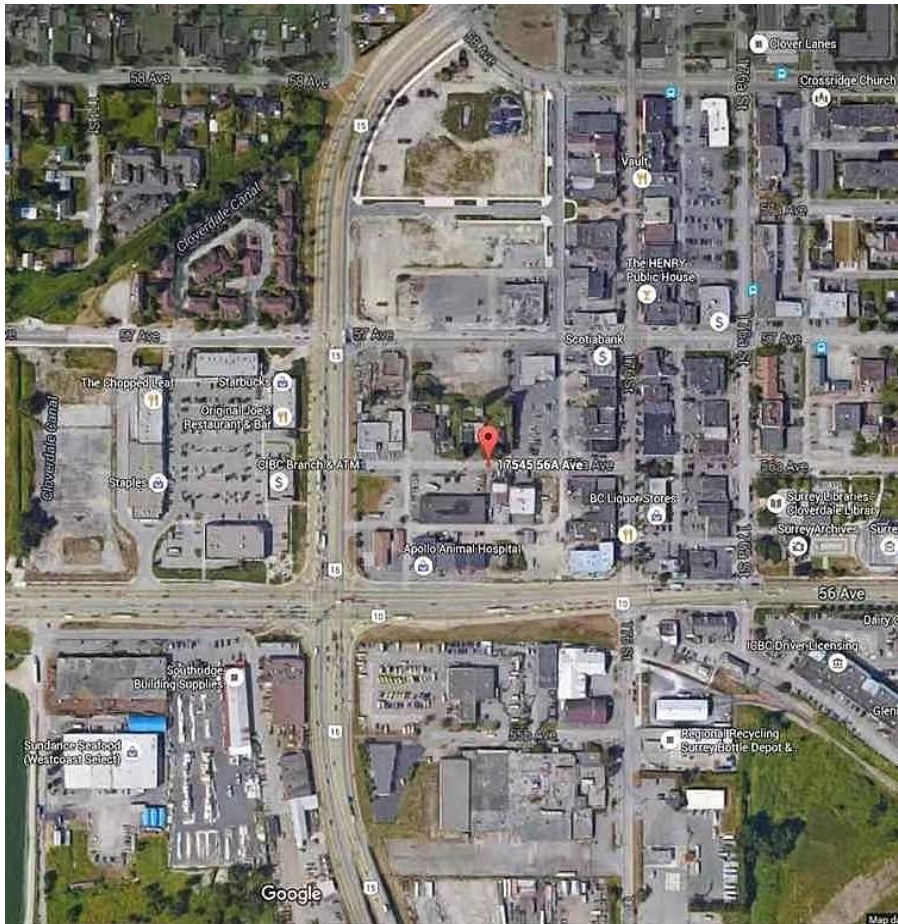


17545 56a Avenue, Surrey

\$1,499,000



Great opportunity to own 124x66 industrial zoned property in Cloverdale Town Centre.

KEY INFORMATION

MLS® R2687912

Residential Detached

Cloverdale

2 Bedrooms

2 Bathrooms

2,522 SF

8,184 SF Lot

FEATURES

Year Built: 1957

Listed By: Macdonald Realty Westmar