

# 34580 Merlin Drive, Abbotsford

\$1,099,000



This 5 bedroom 3 bathroom home is ready for a new family to enjoy! The large foyer is welcoming and spacious. Downstairs is a rec room that leads to a games room and 2 bedrooms and 1 bathroom down, wet bar & a separate entrance. Upstairs is nice and bright with sunlight coming into the living room, dining room, & kitchen. Not to mention the enclosed sunroom / family room! 3 more bedrooms upstairs with beautiful Mahogany French doors off the master bedroom leading to the large and private sundeck! When it's time for the sun to leave for winter, you will appreciate the wood fireplace upstairs and the gas fireplace downstairs. Room for RV parking within the fenced side yard with RV gate & person gate. A large front yard & additional private side yard surrounded with hedges. Call today!

## KEY INFORMATION

MLS® R2687640

Residential Detached

Abbotsford East

5 Bedrooms

3 Bathrooms

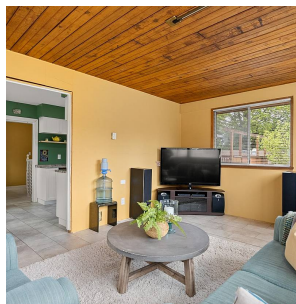
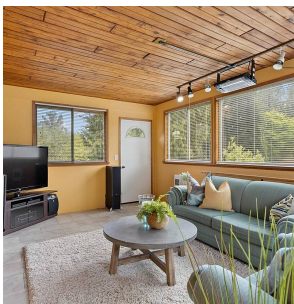
2,730 SF

7,626 SF Lot

## FEATURES

Year Built: 1975

Listed By: RE/MAX Treeland Realty



rennie