

218 11077 Ravine Road, Surrey

\$475,000



Welcome to Ledgeview by Quadra Homes! This 1 bedroom 1 bathroom home has it all! Conveniently located near Gateway Skytrain and SFU but on a quiet residential location. Gourmet kitchen stocked with stainless steel, high end appliances including a 5 burner gas cooktop, convection oven & quartz countertops. Heated tile floors in bathroom, 9 ft ceilings, oversize windows. High quality finishings, A/C ready, nice sized patio with gas BBQ hookup, no rental restrictions, 1 parking stall pre-wired for electric car, bike storage, rooftop patio and a 5000 sq ft amenity room with huge gym!

KEY INFORMATION

MLS® R2688123

Residential Attached

Whalley

1 Bedroom

1 Bathroom

519 SF

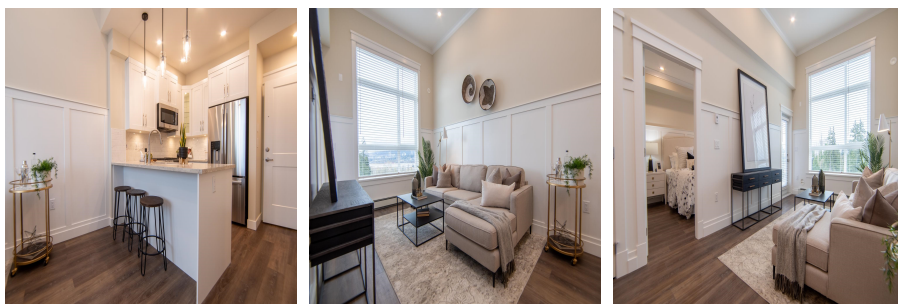
\$232.75 Maintenance Fees



FEATURES

Year Built: 2022

Listed By: Lighthouse Realty Ltd.



rennie