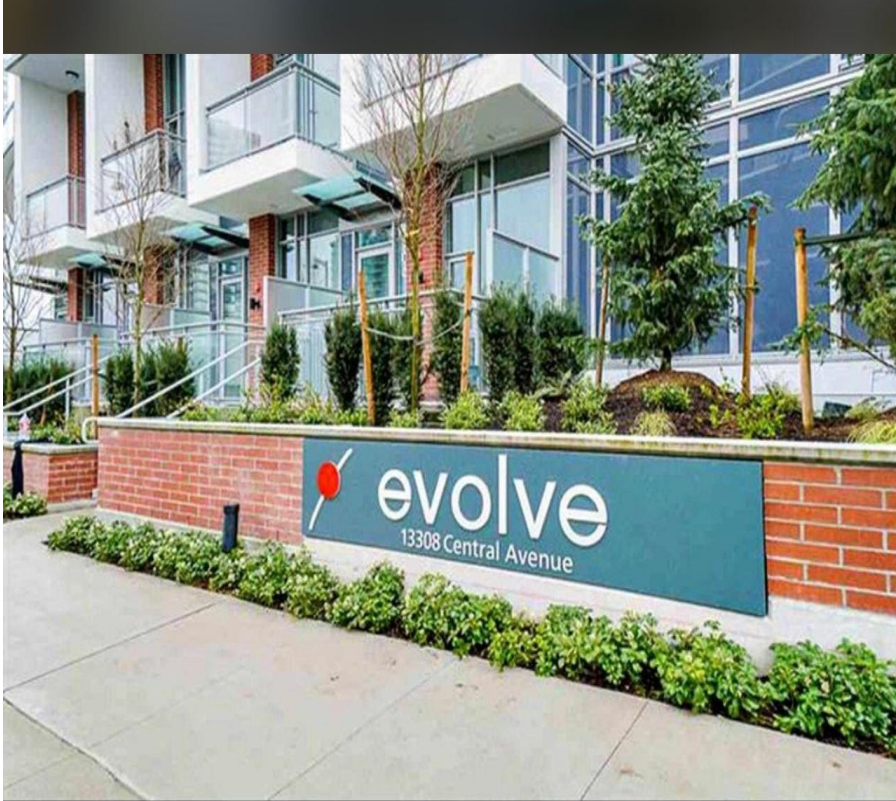


3505 13308 Central Avenue, Surrey

\$1,199,888



Welcome to this Stylish, Affordable Luxury 2-Storey PENTHOUSE in the Modern Evolve Tower at the heart of Surrey City Centre. Spectacular SOUTHEAST panoramic views of the city, river & mountains compliment this 2-bedroom, 2 bath + LOFT condo. The Loft is ideal for a natural light infused Den or Entertainment hub. Enjoy the ultimate outdoor living space on the massive Roof-Top Deck that is sun-drenched and a delight to relish the stunning night lights. Timeless modern design featuring earth-toned tile, quartz countertop, under-mount LED lighting, smart windows, fully air-conditioned, 9' ceiling, 1,289 sqft. New home warranty still remains. Amenities include: 24 hr Concierge, Gym, Lounge, & more. Steps to Skytrain, SFU campus and shopping centre.

KEY INFORMATION

MLS® R2688038

Residential Attached

Whalley

2 Bedrooms

2 Bathrooms

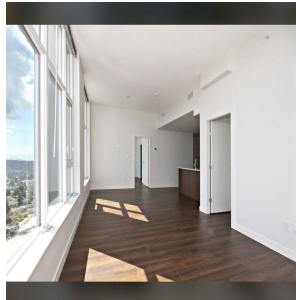
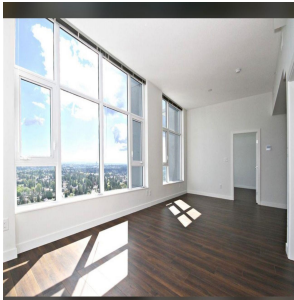
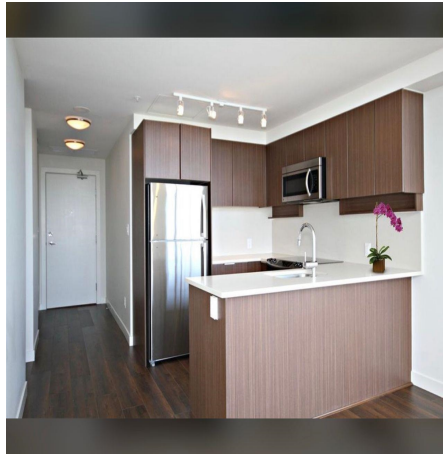
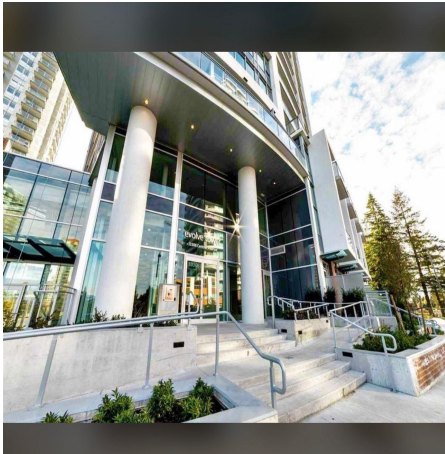
1,289 SF

\$850.00 Maintenance Fees

FEATURES

Year Built: 2018

Listed By: Nationwide Realty Corp.



rennie